



**Ministerio de Economía y Finanzas**  
**DIRECCION GENERAL DE PROGRAMACIÓN MULTIANUAL DEL**  
**SECTOR PÚBLICO**

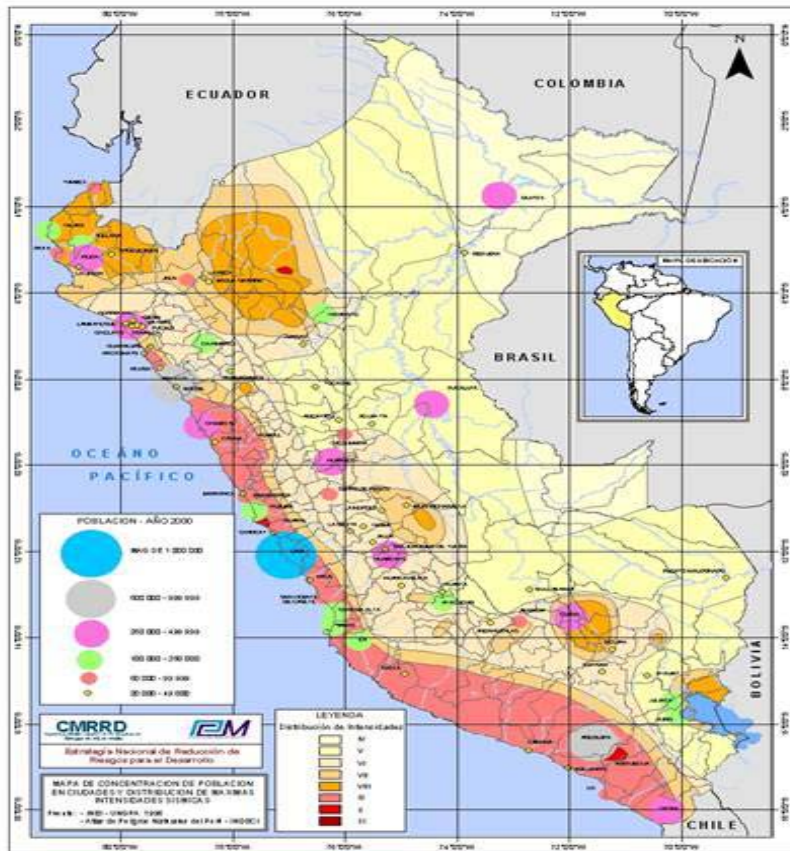


**SNIP & RISK HANDLING**

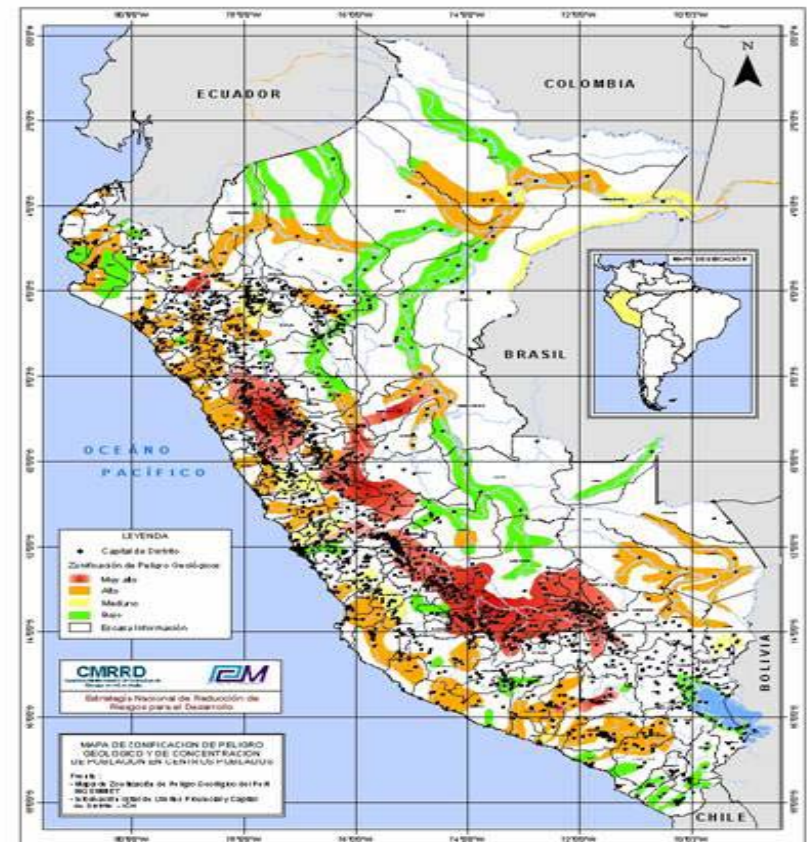


# DEVELOPMENT AND VULNERABILITIES

Space occupation for establishments of population and production of goods and services: location in zones prone to dangers.

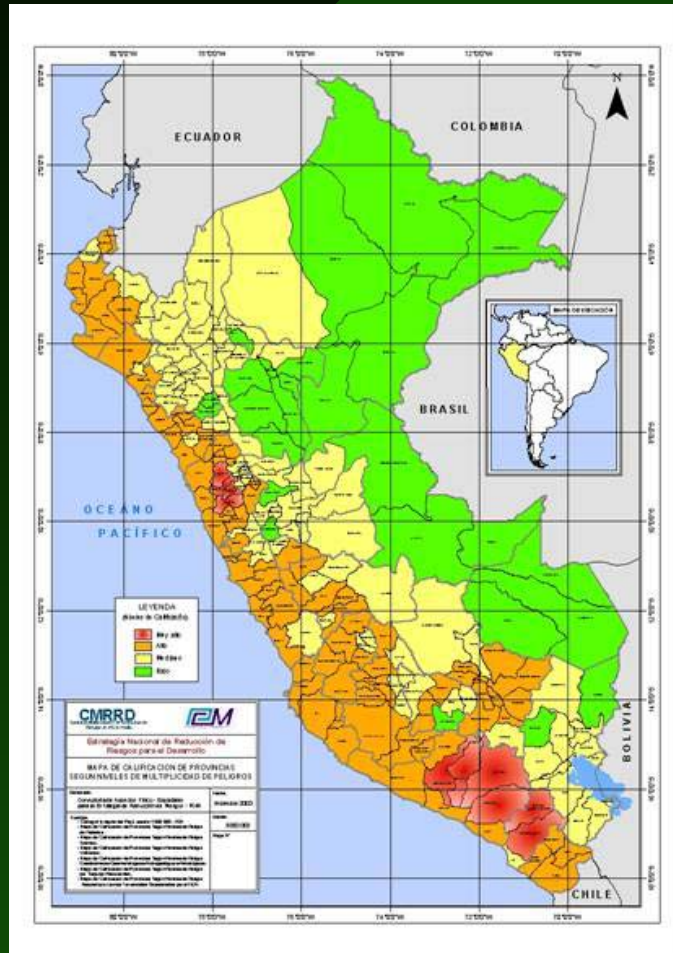


71% of the population in areas of very high and high seismic danger.



Concentration of villages in zones of high geologic danger.

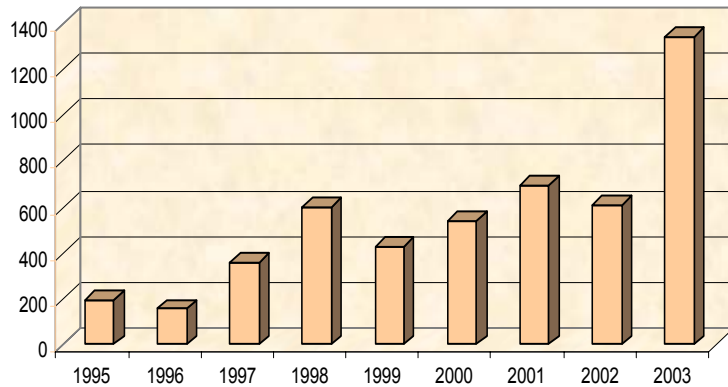
# Multiplicity of Dangers



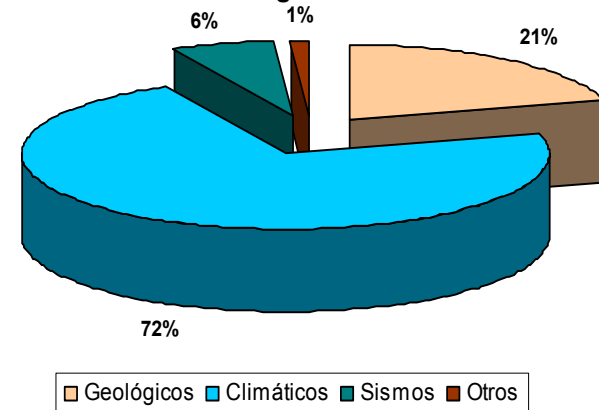
- Another approximation of territorial priorities.
- It gives more importance to seismic dangers due to its devastating potential.
- It defines areas of special treatment.

# Disasters associated to natural dangers in Peru

Evolution of emergencies - Natural Phenomena

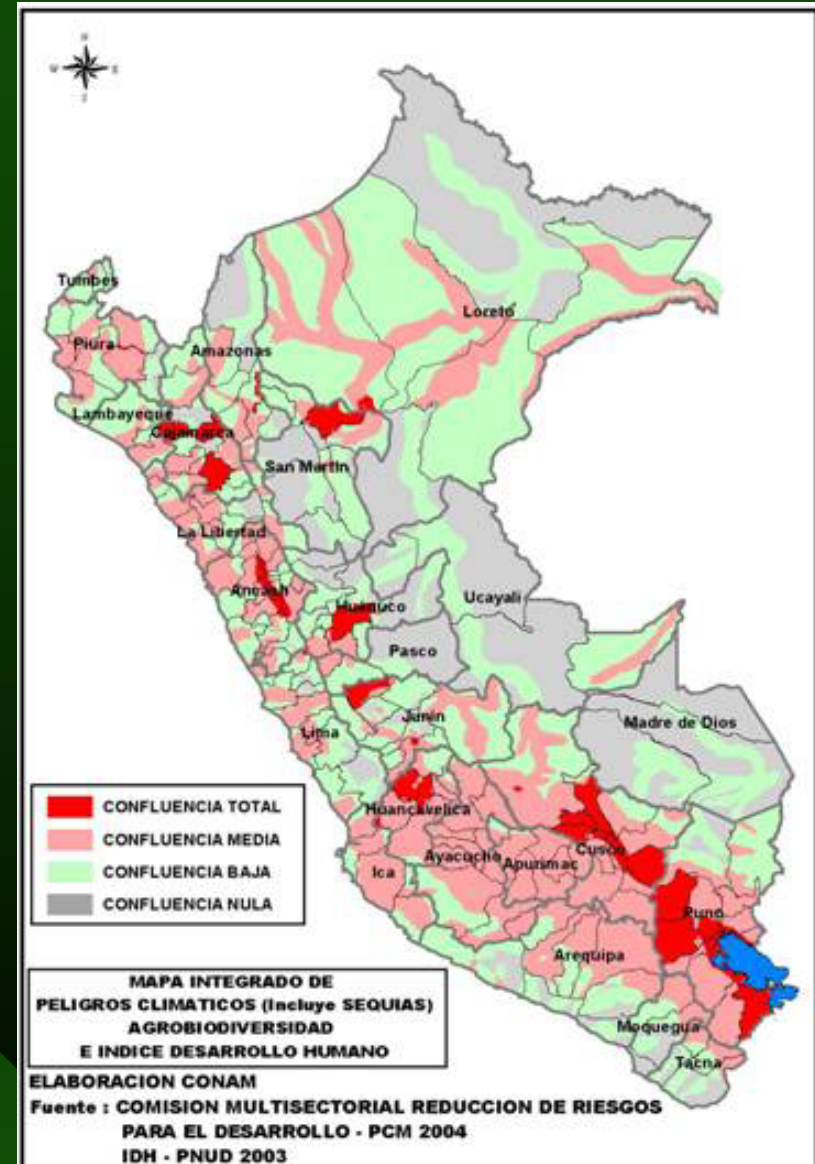
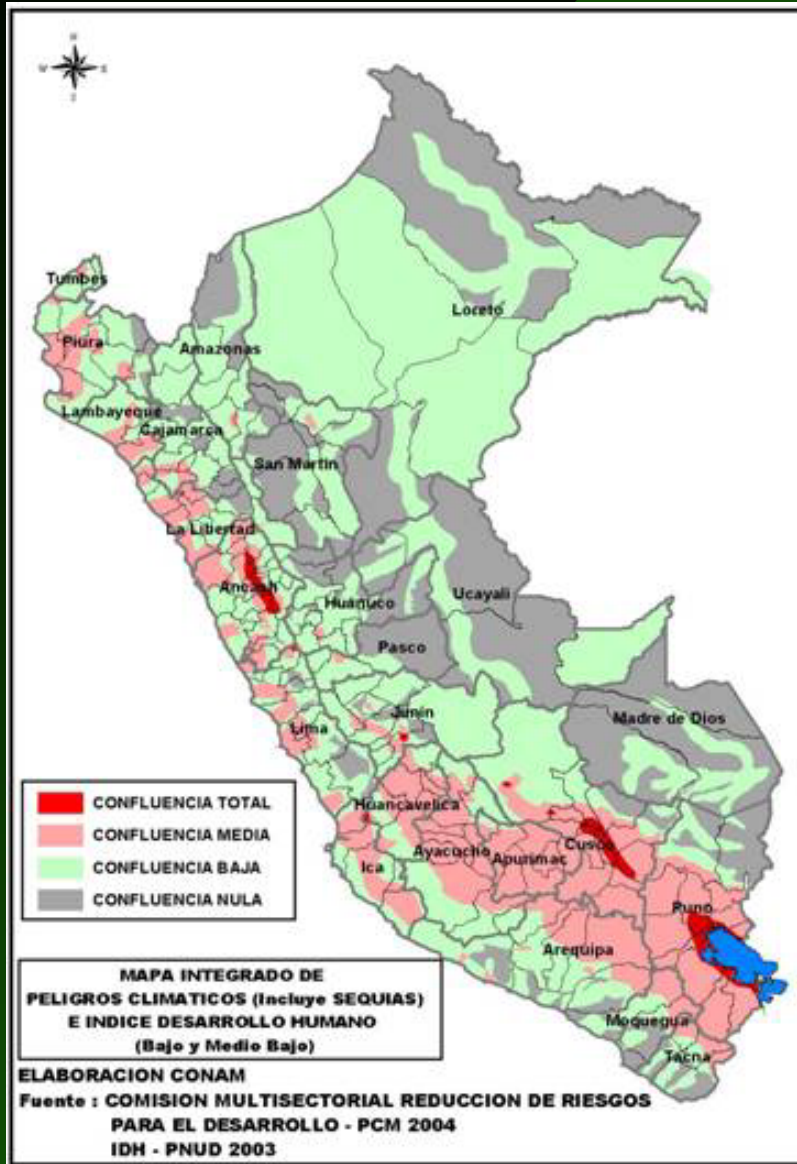


Emergencies 1995-2003 according to the type of danger





# Climatic dangers, poverty and atmosphere

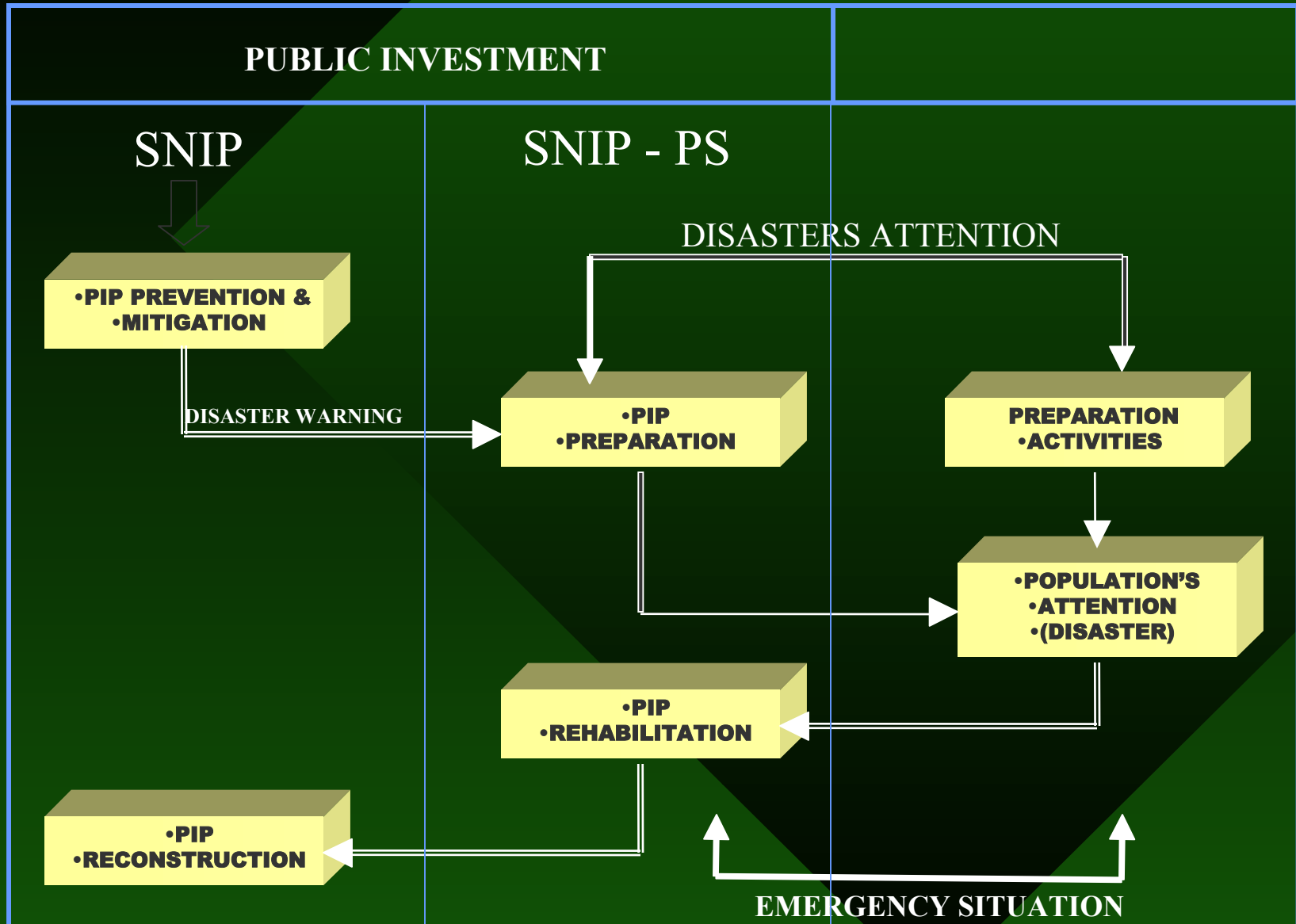


An approximation of territorial priorities only climatic dangers

# TOTAL EMERGENCY REPORTS 1993 – 2003



# SNIP AND DISASTERS ATTENTION



## REHABILITATION

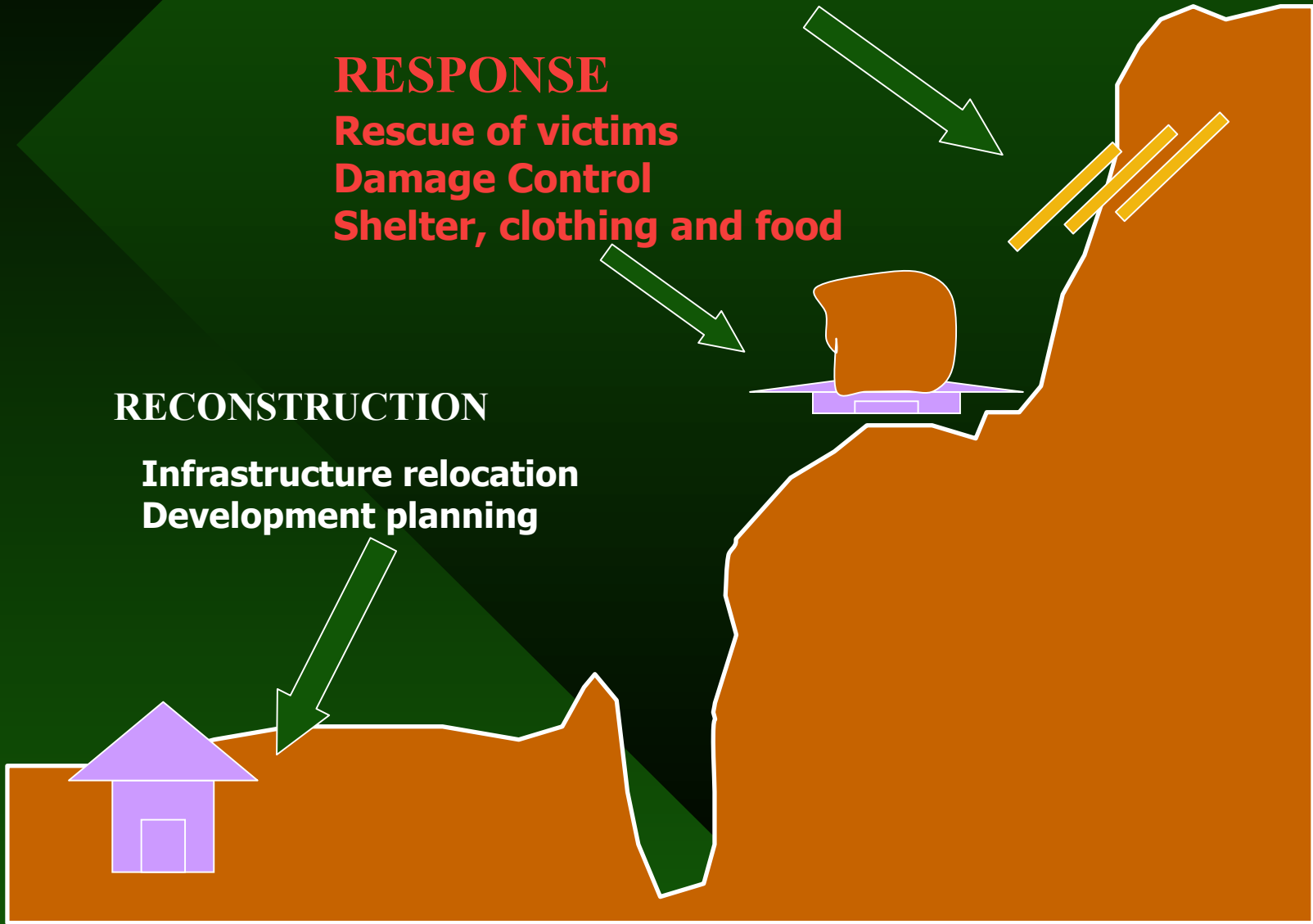
Rebuild retaining walls  
Clean ditches  
Renewal of basic services

## RESPONSE

Rescue of victims  
Damage Control  
Shelter, clothing and food

## RECONSTRUCTION

Infrastructure relocation  
Development planning





## ¿WHAT DO WE SEEK WITH THE APPLICATION OF THIS SYSTEM?

- IMPROVE THE STATE'S CAPACITY OF RESPONSE TOWARDS AN EMERGENCY CAUSED BY A DISASTER
- OPTIMIZE PUBLIC RESOURCES USE.
- DIMINISH THE COUNTRY POVERTY LEVELS, ESPECIALLY WITH THE RURAL POPULATION.

## **SNIP's AIM – SIMPLIFIED PROCEDURE:**

IDENTIFY, EVALUATE AND PRIORITIZE THE PIP'S RELATED TO THE ATTENTION OF DISASTERS THAT FORM PART OF A PROGRAM APPROVED BY THE MULTISECTORIAL COMMISSION OF PREVENTION AND ATTENTION OF DISASTERS (CMPAD).

# **SIMPLIFIED PROCEDURE**

## **ELEGIBILITY CRITERIA**

- LOCATED IN A ZONE DECLARED IN EMERGENCY SITUATION BY A RECENT EVENT.
- AFFECTED BY NATURAL DISASTERS AND NOT LOCATED IN A ZONE DECLARED IN EMERGENCY SITUATION, PREVIOUS APPROVAL OF THE CMPAD.
- THE ACTIONS TO BE EXECUTED MUST HAVE A NEXUS OF DIRECT CAUSALITY WITH THE EXTREME NATURAL PHENOMENON THAT CAUSED OR CAN CAUSE A DISASTER.
- IT MUST IMPLY A SHORT PERIOD OF EXECUTION

## INSTRUMENTS

- Eligibility Technique Card
- DGPM's legal norms
- Agreements subscribed between INDECI and the executors units
- Situation Report Formats

# Procedure to incorporate Risk Analysis in a pre investment study

## DIAGNOSIS OF THE INFLUENCE AREA OF THE STUDY

🔍 Area characterization

🔍 Dangers inventory and impacts historical data

### **D**ANGER-THREAT ANALYSIS RELATED TO THE PROJECT INFLUENCE AREA

- Type of threat, impact area
- Probable duration, intensity, frequency and damages
- Probabilistic analysis of future occurrence and its characteristics

### **V**ULNERABILITY ANALYSIS OF THE PROJECT ELEMENTS

- Elements exposure
- Susceptibility or fragility
- Resilience Degree

### **R**ISK ANALYSIS IN ALTERNATIVES

- Estimation of the magnitude of probable damages on vulnerable elements

### ANALYSIS OF **R**ISK REDUCTION MEASURES IN THE SELECTION OF ALTERNATIVES

- Estimation of the costs and benefits of the risk reduction alternatives
- Incorporation of such costs and benefits in the alternative project evaluation

**CHOSEN ALTERNATIVE INCORPORATES RISK ANALYSIS AND  
GUARANTEES SUSTAINABLE INVESTMENT**





**Ministerio de Economía y Finanzas**  
**DIRECCION GENERAL DE PROGRAMACIÓN MULTIANUAL DEL**  
**SECTOR PÚBLICO**

