

Global unique disaster Identifier number (GLIDE)

<Enabling the Linking of National and Global Databases>

<http://glidenumber.net>



20 January 2005

Masaru Arakida

Asian Disaster Reduction Center

GLIDE

How can we convince the national policy makers that

Disaster Reduction is a **MUST** for Sustainable Development in Asia

- A single disaster can wipe out annual GDP of a country.
- Natural Disasters can be the biggest obstacle to social security of a country.

Numbers of Victims of Recent Natural Disasters in Asia

Ratio of Amount of Damage to GDP (Asia) (1975-2002)

Year	Country	Disaster	Number of Dead and Missing
1998	Afghanistan	Earthquake	4,700
	PNG	Tsunami	2,600
1999	Turkey	Earthquake	15,500
	India	Cyclone	9,500
2001	India	Earthquake	13,805
2002	Afghanistan	Earthquake	More than 800
	Korea	Typhoon	246
2003	Sri Lanka	Landslide	236
	Iran	Earthquake	More than 40,000

Country Name	Year	Disaster Type	Damage/GDP
Armenia	1988	Earthquake	908%
Mongolia	1996	Wild Fire	192%
Mongolia	2000	Wind Storm	97%
Lao, PDR	1993	Wind Storm	27%
Nepal	1987	Flood	26%
Georgia	1991	Earthquake	22%
Mongolia	1990	Wild Fire	21%

How can we make this kind of info available to convince the financial authorities?

GLIDE - For Effective Disaster Information Sharing & Management

Background

- Each organization has its own databases using its own coding system
- No access between databases
- It's not easy to relate one event data to another database's data



Difficulty to match data

Different names are used;

(West) India Earthquake, Gujarat Earthquake, Bhuj Earthquake, Kobe Earthquake, Hanshin- Awaji Earthquake, Hyogo-Nanbu Earthquake

Different dates are registered;

Difficult to identify when a flood/drought started

By introducing GLoBal unique disaster IDentifier

- Easy access to various data sources
- Rapid automatic linking by search engine

Facilitate Effective Info. Sharing

Anatomy of the GLIDE Number

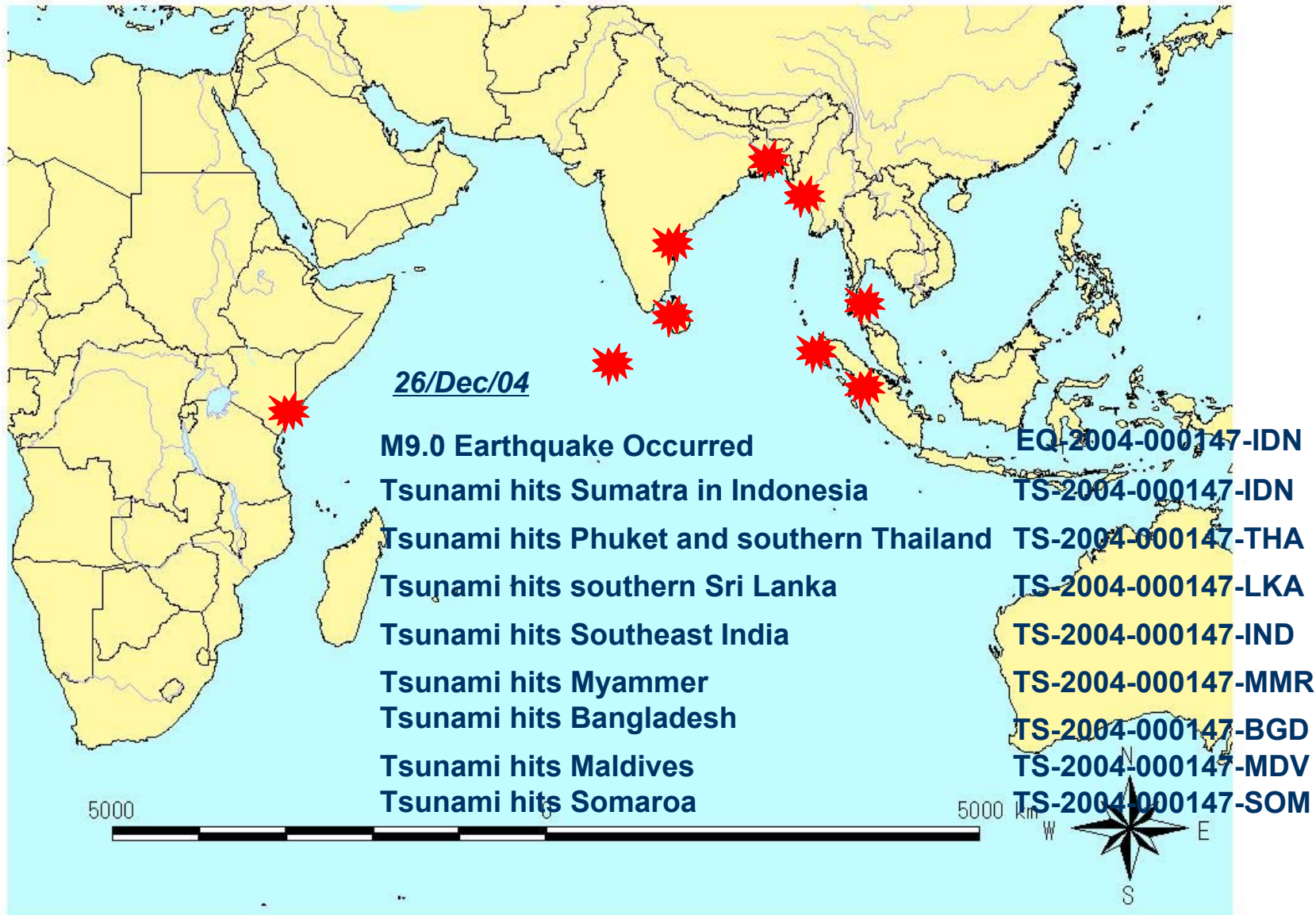
- The first part of the GLIDE Number is two-character code signifying **the hazard**
- The second part of the number represents **the year** the hazard event occurred
- The third part is **six-digit serial number** assigned to each hazard event in chronological order in the year
- The three-character code appended at the end is the three letter **ISO country code**



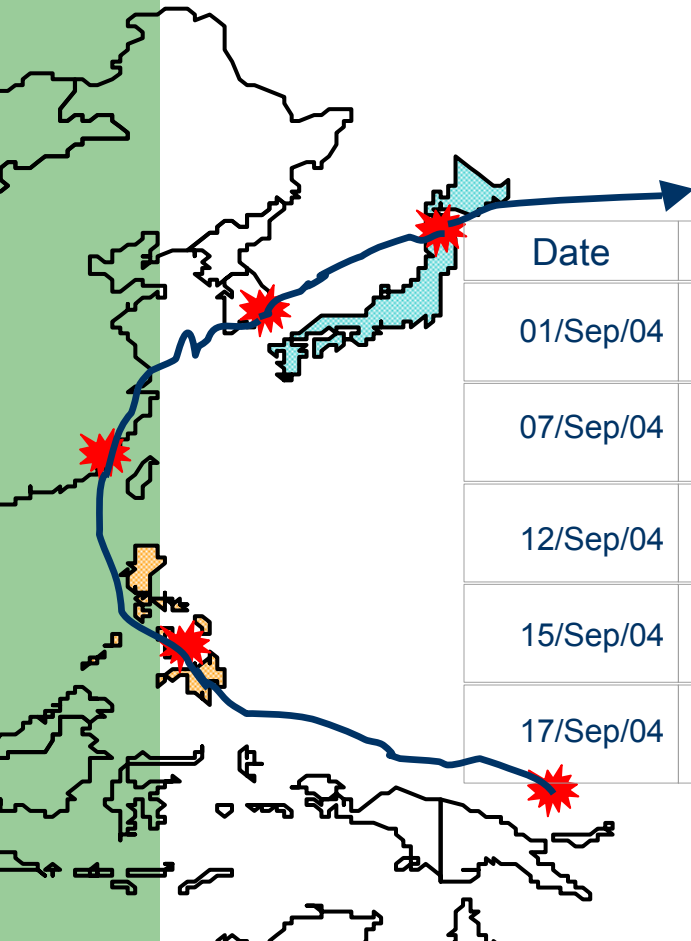
Hazard Code

-2003		2004-			
DR	Drought	DR	Drought		
ET	Extreme Temperature	CW	Cold Wave	HT	Heat Wave
ST	Wind Storm	TC	Tropical Cyclones	EC	Extratropical Cyclone
		TO	Tornadoes	VW	Violent Wind
		SL	Severe Local Storms		
FL	Flood	FL	Flood	FF	Flash Flood
SL	Slide	LS	Land Slide	AV	Snow Avalanche
		MS	Mud Slide		
VO	Volcano	VO	Volcano		
EQ	Earthquake	EQ	Earthquake	FR	Fire
WV	Wave/Surge	TS	Tsunami	SS	Storm Surge
EP	Epidemic	EP	Epidemic		
IN	Insect Infestation	IN	Insect Infestation		
WF	Wild Fire	WF	Wild Fire		
OT	Other	OT	Other		
CE	Complex Emergency	CE	Complex Emergency		
AC	Accident	AC	Accident		

Easy info. sharing tool for Indian Ocean Tsunami



Easy info. sharing tool for Ongoing and multi countries Disasters

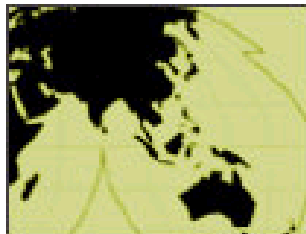


Date	Phenomena	GLIDE
01/Sep/04	WMO generate GLIDE for typhoon A	TC-2004-000817-
07/Sep/04	Many houses were lost in Philippines	TC-2004-000817-PHL
12/Sep/04	200 people evacuated to avoid StormSurge in China	SS-2004-000817-CHI
15/Sep/04	10 people dead by Landslide in Korea	LS-2004-000817-KOR
17/Sep/04	1000 houses were flooded in Japan	FL-2004-000817-JPN

Global IDentifier (GLIDE) Number

Automatic Link to ReliefWeb

http://www.reliefweb.int/w/rwb.nsf
/GLIDE?OpenForm&GLIDE=EQ-
2003-0630-IRN



The latest Disaster information

GLIDE: EQ-2003-0630-IRN

Iran (Islamic Republic Of) : Earthquake : 2003/12/26

ReliefWeb

Duration	2003/12/26
Country or District	Iran (Islamic Republic Of)
Name	Earthquake

Headline (Source, Date)

Personal Injury

BBC news 2004/01/16

ReliefWeb

Latest GLIDE Documents

[Home](#) [Search](#) [Site Map](#) [Contact](#) [Help](#)

Select - Menu -

Search

Latest documents pertaining to GLIDE No. EQ-2003-0630-IRN

[\[ReliefWeb Maps\]](#)

◀ Previous Next ▶

[21-Apr-2004](#) | **IRCS**

IRC Psychological support team response-Bam earthquake

[13-Apr-2004](#) | **IFRC**

Bam operation enters new phase

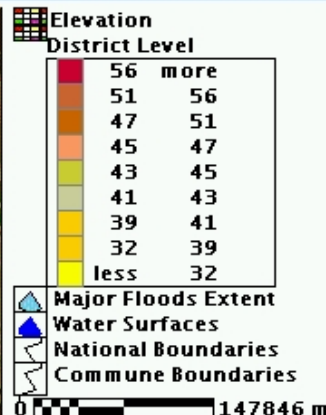
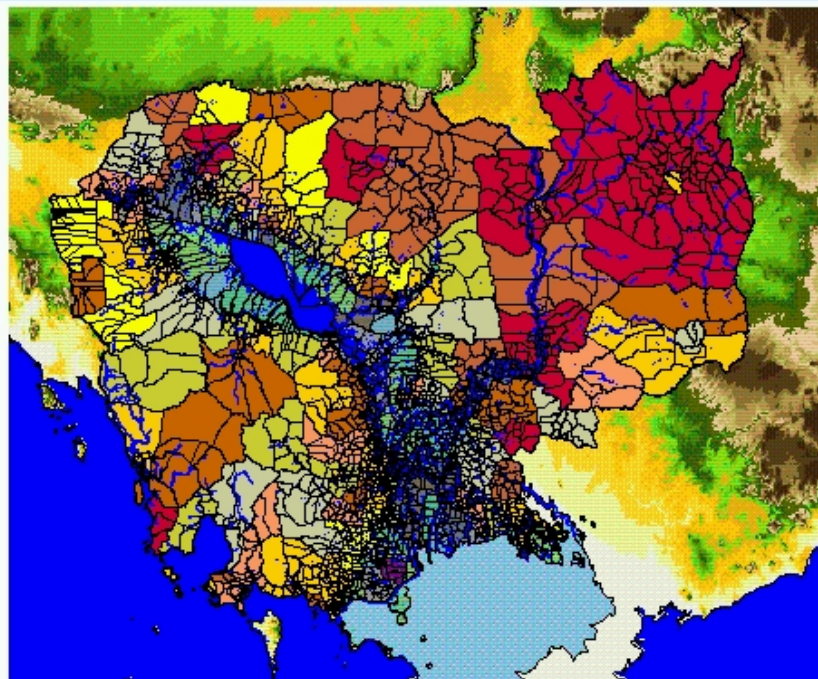
[13-Apr-2004](#) | **IRCS**

Distribution of assistance in Bam



% Underweight (<5 yrs), Unspecified

[View All](#) [Fit](#) [Enlarge](#) [Shrink](#) [Legend Off](#)



***FAO begins to use
GLIDE on the web-GIS!***

Map Source:

[Major Floods Extent](#)
Mekong River Commission
GLIDE#: FL-2000-000438-KHM
[GIEWS Special Reports and Alerts 2000](#)

[Water Surfaces](#)

Ministry of Public Works and Transport; Japan International Cooperation Agency

GLIDE#: FL-2000-000438-KHM

Indicator Data Source:

Provincial Department of Health (PDH)
Ministry of Planning (MOP)

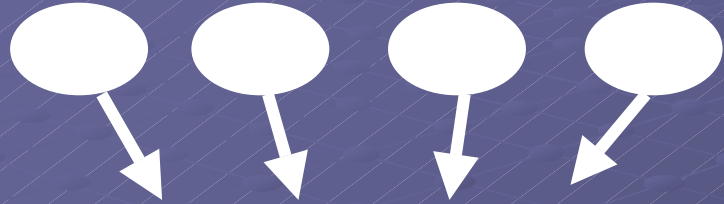
<http://www.asiafivims.net/cambodia/index.jsp>

Indicator Description:

Underweight represents body mass relative to age and refers especially to lightness that is a deficit and is defined as low "weight-for-age" or below -2 standard deviations (or two z-scores) of the median value of the National Center for Health Statistics/WHO International Growth Reference for weight-or weight-for-age. Weight-for-age is influenced by the height of the child and his or her weight and is thus a composite of stunting and wasting. Weight-for-age is an outcome of both short and long-term food shortages, other forms of vulnerability or poor health conditions. Therefore, prevalence of underweight children is suggested as one of the main variables to be included in the Cambodia FIVIMS.

EVENT

GLIDE Partners



GLIDE Generator

New GLIDE

GLIDE Report

USERS

GLIDE DB

GLIDE Search

GLIDE Manager

- Information sharing with GLIDE is needed immediately after the event.
- After the event, GLIDE partners access the **GLIDE Generator** for a new GLIDE of the event.
- GLIDE should be the **Unique ID** for each event.

<http://glidenumbers.net>

GLIDE_{number}

Automated GLobal IDentifier Number Generation Site

Enter

CDERA and FAO participated last Year.



Expecting more partners to join.

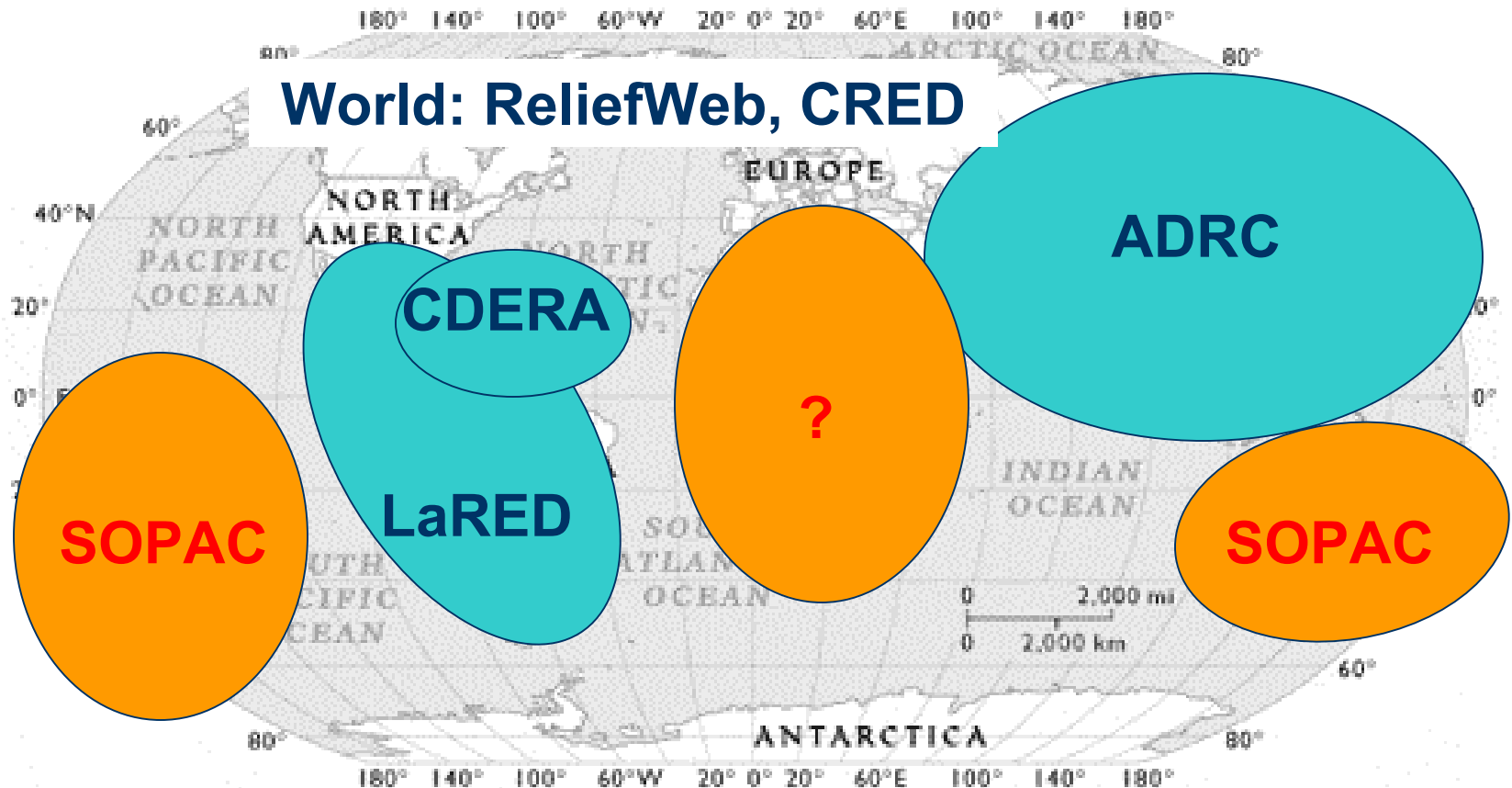
Current states of GLIDE utilization

GLIDE Operators	ADRC, CRED, LaRED, ReliefWeb and <u>CDERA (Caribbean Disaster Emergency Response Agency)</u>
using GLIDE for databases	ReliefWeb, ADRC, <u>FAO</u> , <u>NIED (National Research Institute for Earth Science and Disaster Prevention of Japan)</u>
preparing for use	<u>CDERA</u> , CRED, DRI, LaRED, <u>NII (National Institute of Informatics of Japan)</u> , <u>about 20 National Organizations</u> , <u>JAXA (Japan Aerospace Exploration Agency)</u>
Endorsed by	IRI, ISDR, UNDP, WMO

In addition, some disaster related organizations and research institutes have expressed interest.

GLIDE promotion

Need for GLIDE operators



GLIDE Road Map for Disaster Information Sharing

2005

- Seminar for GLIDE users
- User's Manual
- Minor Version-up of GLIDEnumber.net
 - Development of easy linking tool
 - Add historical EM-DAT

2006 -

- Seminar for GLIDE users
- Minor Version-up of GLIDEnumber.net
 - Improvement of user interface by web-GIS
 - Add satellite meta image data

