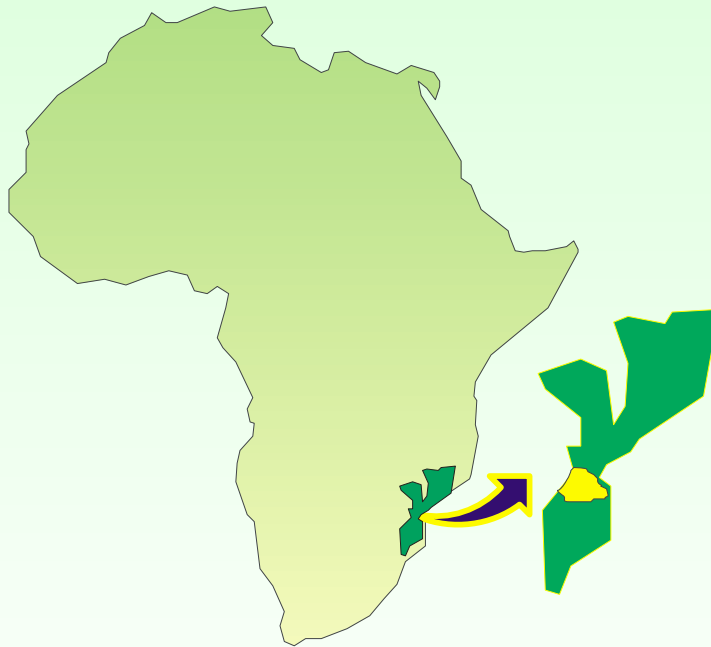


# “Local Governance : Preconditions for effective Disaster Risk Management”



Administration of  
Búzi District, Mozambique

## Good practice examples of Disaster Risk Management in the Búzi District of Central Mozambique



**Lucas Simão Renço -**

**District Administrator of Búzi District, Mozambique**

# The why and how of Disaster Risk Management in the Búzi District



Administration of  
Búzi District, Mozambique

## **THE WHY** - vulnerability of floods in Búzi District due to:

- Ⓢ Increased frequency of floods (1926,1939, 1943,1974, →1998,2000, 2001)
- Ⓢ Deforestation and erosion of the Búzi River bed
- Ⓢ Population and agricultural expansion into high risk zones
- Ⓢ The time proximity between floods and drought result in settlements and agricultural production in risk zones

## **THE HOW**

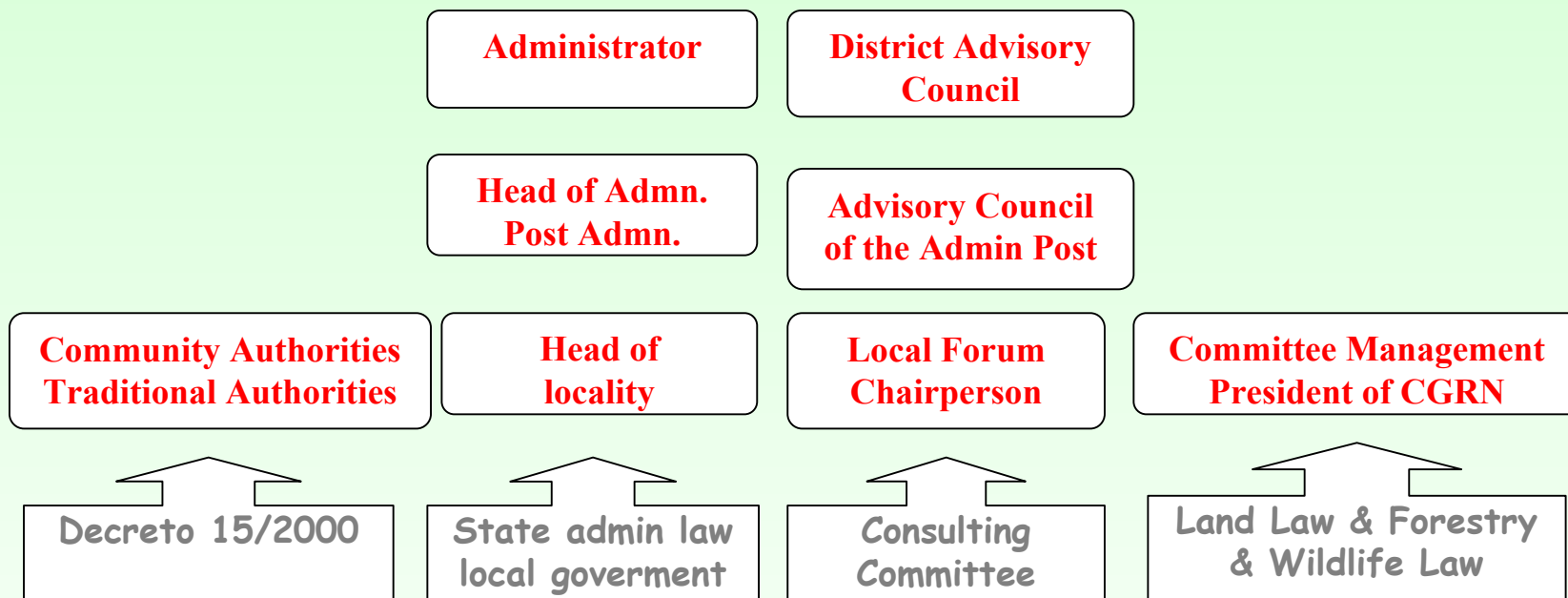
- Ⓢ A detailed risk analysis with community participation in disaster prone areas
- Ⓢ Raising preparedness awareness for emergency situations
- Ⓢ Sensibilization and training programs in DRM via local radio
- Ⓢ Creation of DRM committees at community and district level
- Ⓢ Simulation of a cyclone triggered flood event (warning, evacuation, response)

# Responsibilities of the local government for effective DRM



Administration of  
Búzi District, Mozambique

Central actor for disaster risk management in the districts is the district administrator



Responsibilities of the local government for effective DRM are:

- ② Supporting local/community DRM committees
- ② Facilitate good working relationship between all actors
- ② Incorporation of DRM in district planning process

# Proposed basic structure for the integration of disaster risk management into district development plans



Administration of  
Búzi District, Mozambique

Phase of district development planning		Recommendations for the integration of disaster risk management
I	Expert team (ETP) and publication	Raising awareness of district government, EPAP and ETP for the need and possibilities of disaster risk management <b>Aim: DRM-expertise to be considered in defining the expert team or “sold” to all participants</b>
II	Analysis of the initial situation	Analysis of vulnerabilities, risks as well as of jeopardized regions and existing capacities; use of risk mapping in the localities <b>Aim: consideration of disaster risk in the initial analysis and identification of problems; involvement of the population</b>
III	Drawing up the development strategy	Develop strategies to reduce vulnerabilities, with particular consideration of capacity building <b>Aim: disaster risk management becomes an integrated part of the development strategy</b>
IV	Drawing up the action program	Defining activities with responsibilities and possible sources of financing for disaster risk management <b>Aim: lay the foundation for the implementation of disaster risk management on the basis of the strategy</b>
V	Reviewing and approving	
VI	Implementation and monitoring	Integrating disaster risk management into the district plan monitoring system

Results of a workshop on the integration of disaster management into district development plans in Mozambique, held 16th and 17<sup>th</sup> September 2004 in Búzi

# Involvement of Civil Society in DRM process



Administration of  
Búzi District, Mozambique

## Civil Society is involved through a participatory process in DRM specifically:

- ① First contact in the communities with traditional chiefs and elders
- ① Organisation/creation of a local/community DRM Committee/Group
- ① Risk analysis and DRM activity planning in a participatory manner
- ① DRM training in local languages directly in the communities
- ① Facilitate good working relationship between DRM and relevant institutions on all levels
- ① Execution of flood simulation exercise before the cyclone period



# Provincial and national entities supporting local government



Administration of  
Búzi District, Mozambique

## Institutional Support through:

- ① Capacity building of human resources in the government, civil society and the communities
- ① Consideration and inclusion of district proposal regarding strategy and the integration of DRM into the district development plans, which will be approved by the provincial government
- ① Provision of financial resources for DRM activities based on district development plans

# Disaster Risk Management and Climate change



Administration of  
Búzi District, Mozambique

A new component of DRM began in August 2004 in Búzi Region with support of GTZ:

***“Adaptation to climate change in the framework of local disaster risk reduction”***

A new approach to build bridges and engage people within disaster risk reduction, climate change adaptation and communities development, through practical methods, such as:

- ② Gathering of traditional information from the countryside regarding climate and agricultural production in relation to drought and floods
- ② Awareness raising/training of local communities in climate change and disaster risk management
- ② Elaboration of scenarios of climate change models in adaptation regional conditions in Búzi

# Main challenges concerning local governance and DRM



Administration of  
Búzi District, Mozambique

## Reduction of vulnerability through:

- ④ Preparation of communities to deal with the effects of disaster
- ④ Community management of natural resources to reduce vulnerability
- ④ Guarantee good working relationship including good communication and information sharing, both vertically and horizontally between the various actors of DRM
- ④ Territorial planning of defined risk zones and their development





## **“Local Governance : Preconditions for effective Disaster Risk Management”**



**- Thank you very much for your attention -**

**-Lucas Simão Renço -**

**District Administrator of Búzi District, Mozambique**