

National Platform and Natural Hazards in Sweden

Mette Lindahl Olsson

Barbro Näslund-Landenmark

Swedish Rescue Services Agency

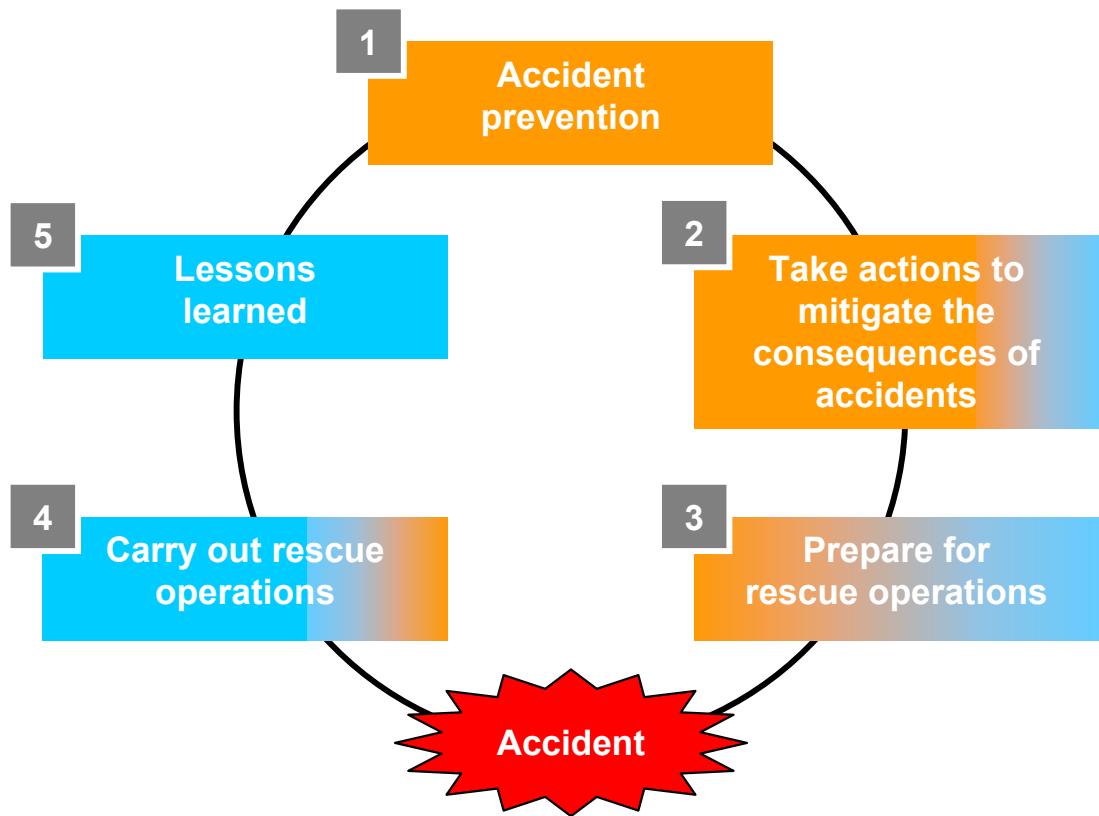
Department of Emergency Prevention

Section for Planning, Construction and Environment

National Platform and Natural Hazards in Sweden

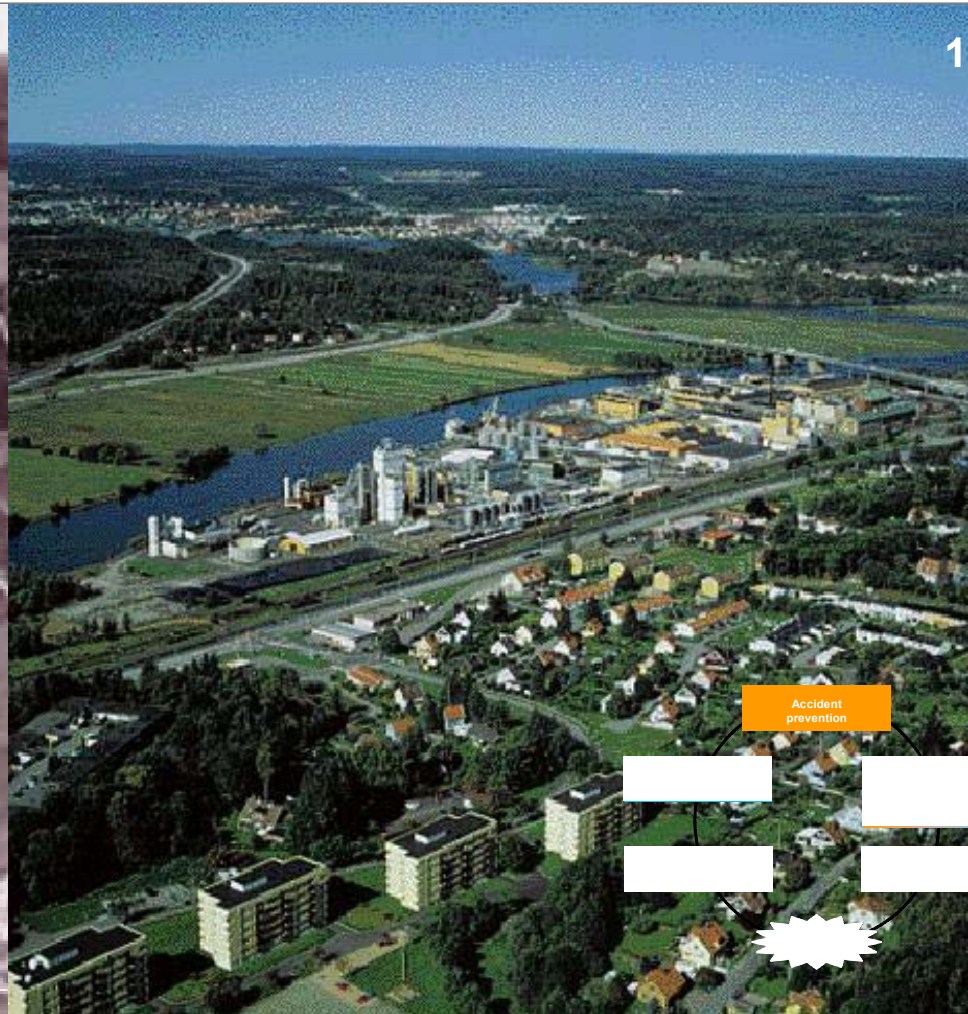


Five stages in an accident process



1. Accident Prevention

- Risk Development in long term planning perspective



0:s

1

2. Take actions to mitigate the consequences of accidents



3. Prepare for rescue operations



Prepare for
rescue operations

4. Carry out rescue operations



5. Lessons learned



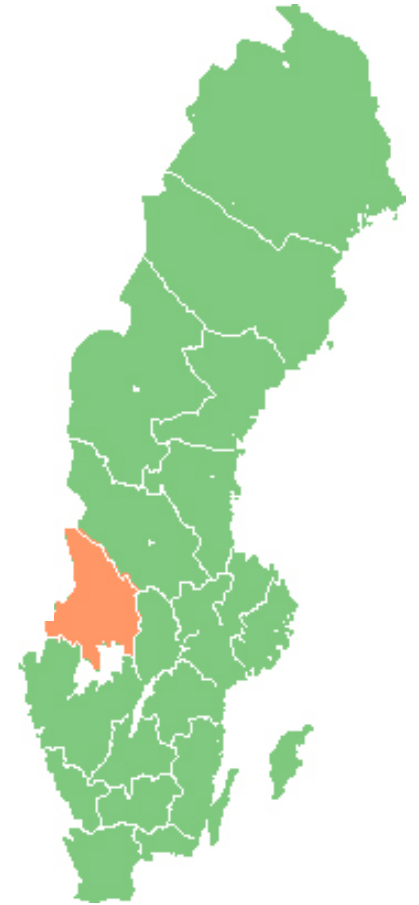
Municipal Responsibilities



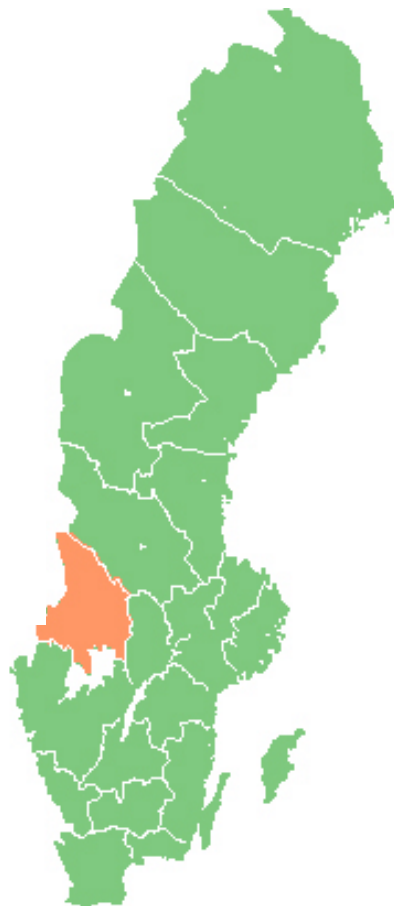
Regional Level



National Platform



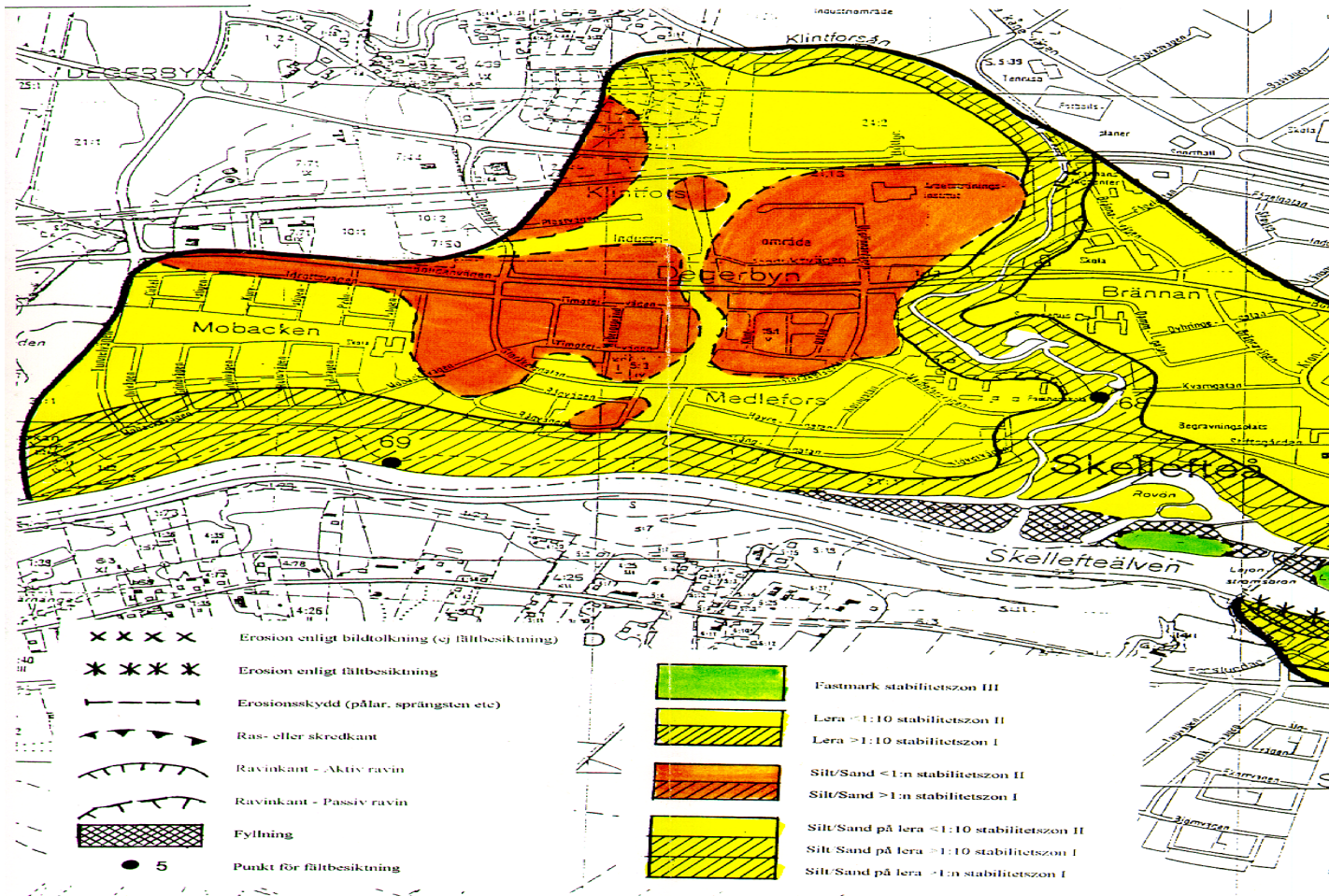
National Platform



Supporting local preventive actions

- Expert advice
- Geological, hydrological and land survey
- General stability and flood risk maps
- Governmental Subsidies for preventive measures mitigating landslides and floodings
- Research and development
- Cooperation – on national and international levels
- Information, Education and Training
- River Coordination groups
- etc

General Stability Map



General Flood Risk Map

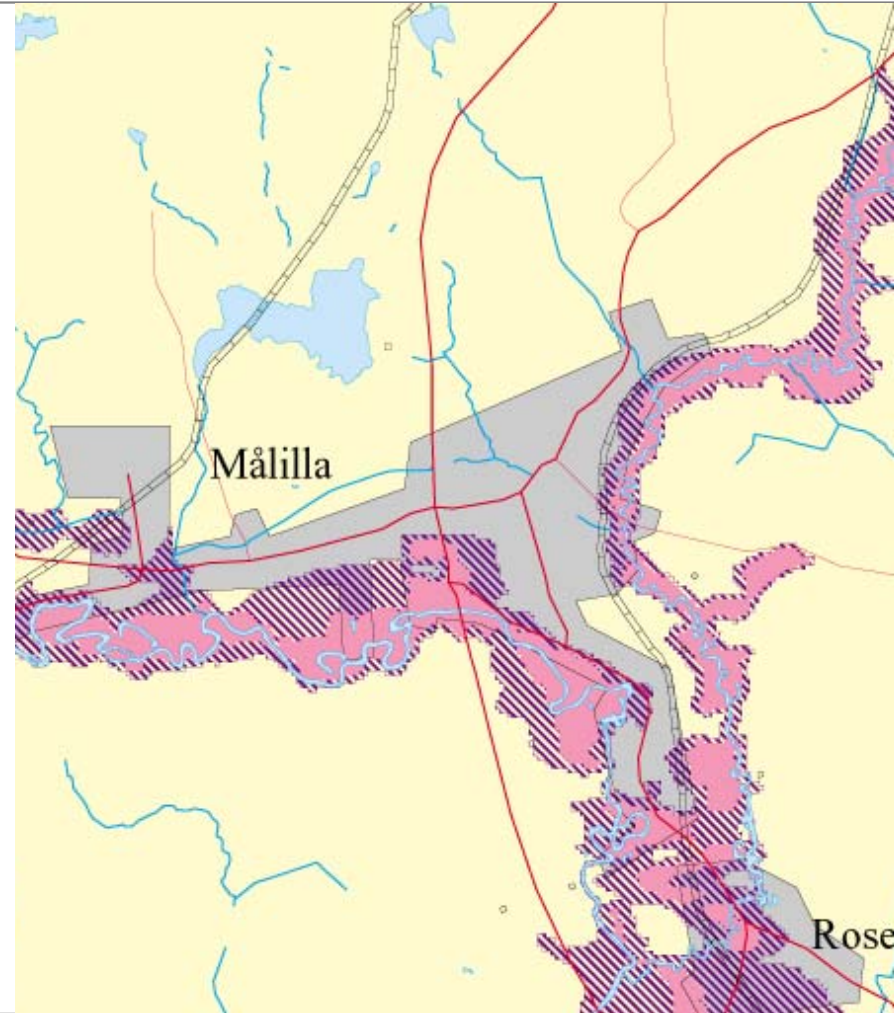
100-year flood

Highest estimated flood according to the guidelines of Swedish Flood Committee, approx 10 000-year flood



General Flood Risk Map
Floods

- Calculated
- Prio 1
- Prio 2
- Prio 3
- Calculation ongoing



General Stability and Flood Risk Maps

Fields of application

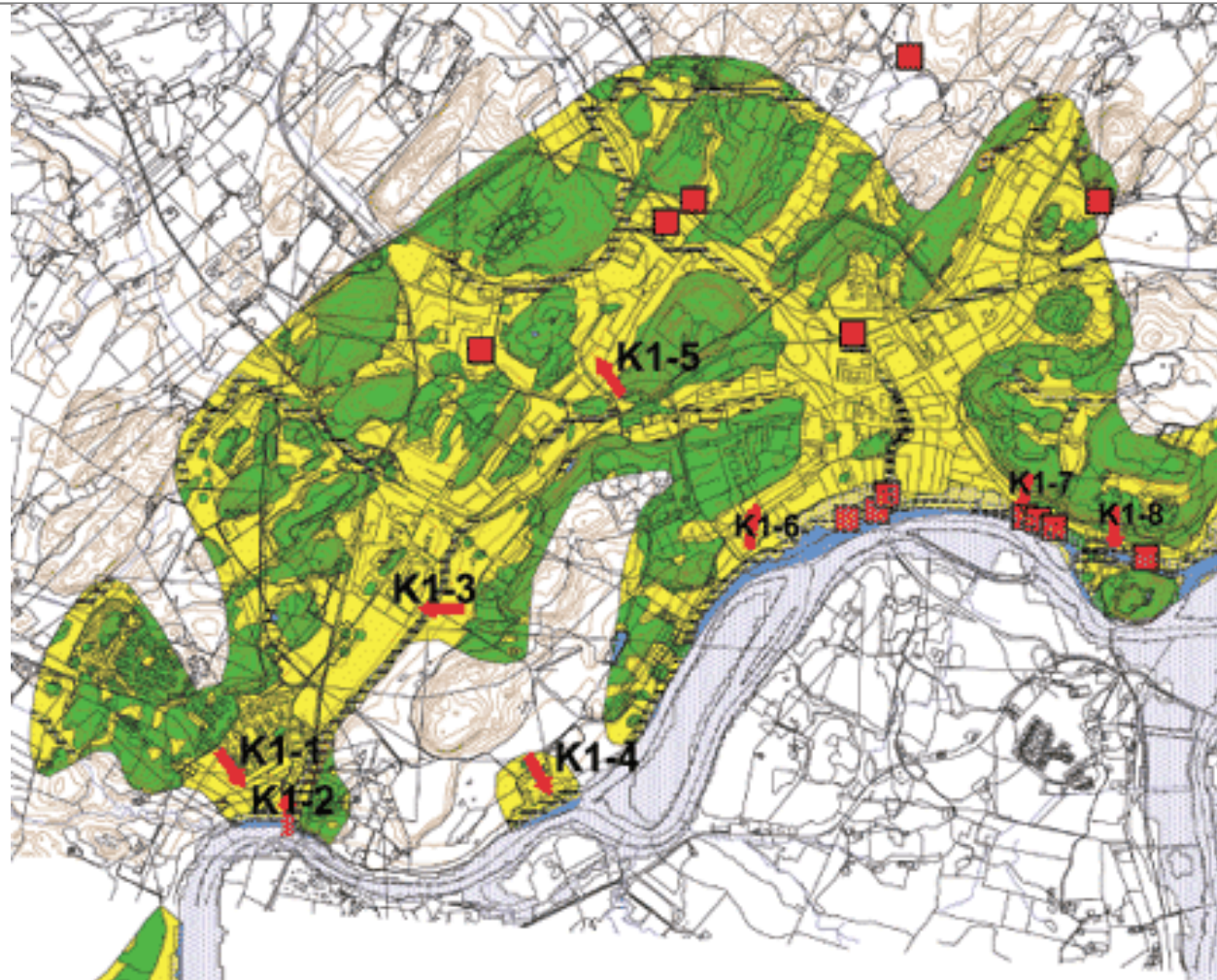
Basic data for municipality risk assessment

General landuse planning

Overall planning of fire & rescue service work

Detailed survey
– permanent preventive measures

Response action
– calculation of current waterlevels and discharges for the ongoing event



River Coordination Groups

SRSA commissioned to initiate establishment of river coordination groups

Watershed based

County Administrative Board task to convene, chair of the group

Network building, preparedness planning and seminars

NP agencies called in when required

Members; F&R services, landuse planners, National Road Administration, National Railroad Administration, Water Regulation Enterprises, SMHI, etc



Governmental Subsidies

- Municipalities can apply
- 25 MSEK/year, 2.5 M Euro or 3.8 M \$
- Performed/planned measures
- Subsidies up to 80% of the threatened objects value
- 2004: approx 25 municipalities applied, applications exceeded 3 times available amount of money
- Commission for SRSA in cooperation with other national expert authorities

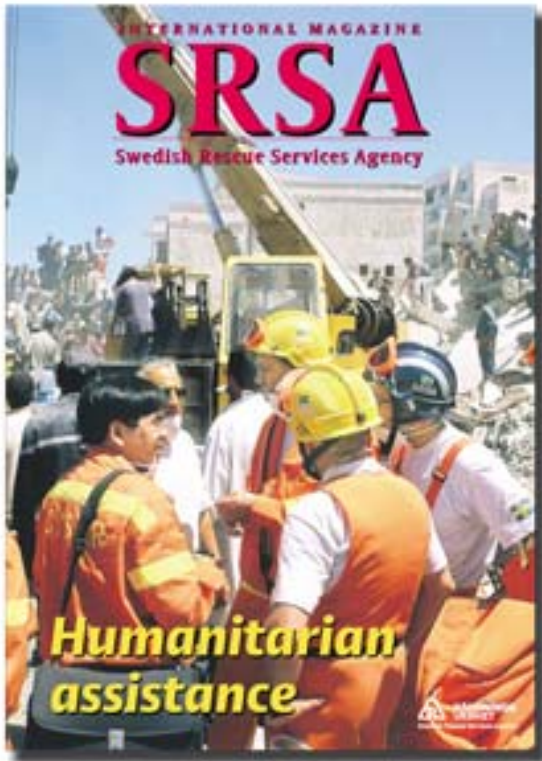
Information, education and training



Future work

- Threats, needs and possibilities
- Weather phenomena
- Capacity building
- Coordination and cooperation

International cooperation



- ISDR
- UN
- EU

