

RISK INFORMATION FOR DECISION-MAKING PROCESSES

Lessons Learned

**Addressing The Root Causes of Vulnerability of
Human Settlements in Megacities**

**World Conference on Disaster Reduction, Kobe
Japan 2005**

Bogotá, Colombia



ALCALDÍA MAYOR
DE BOGOTÁ D.C.

Secretaría
GOBIERNO

Bogotá Distrito Capital



Urban Area: 38.000 Ha

Population: 6.700.000 Hab.

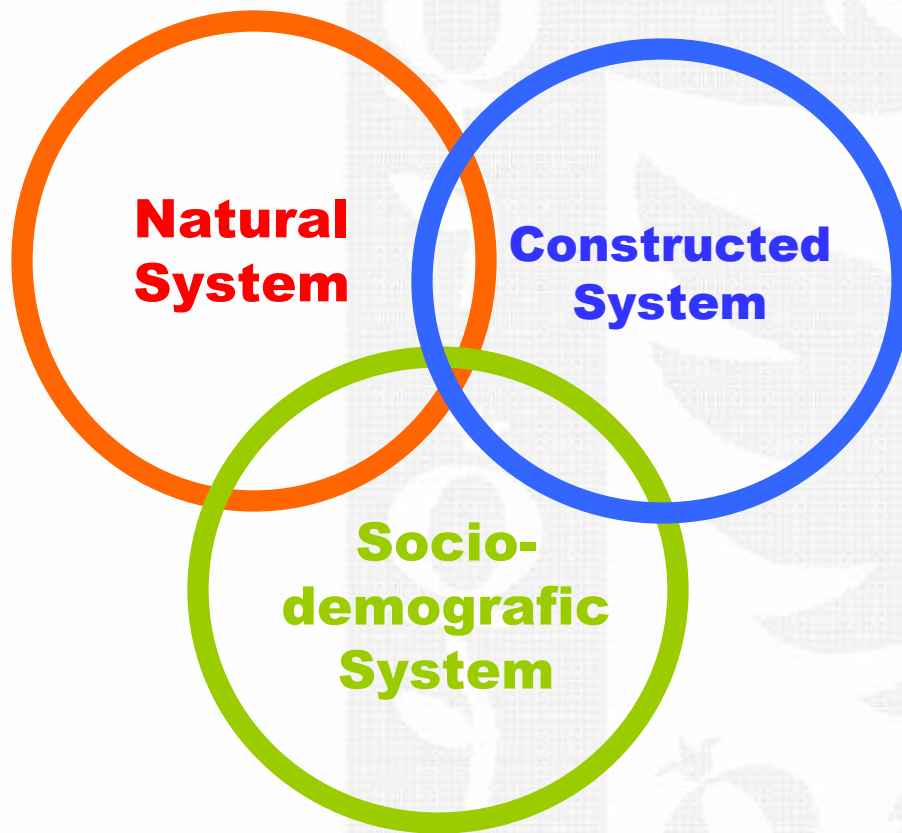


ALCALDÍA MAYOR
DE BOGOTÁ D.C.

Secretaría
GOBIERNO

Bogotá sin indiferencia

Risk Genesis



ALCALDÍA MAYOR
DE BOGOTÁ D.C.

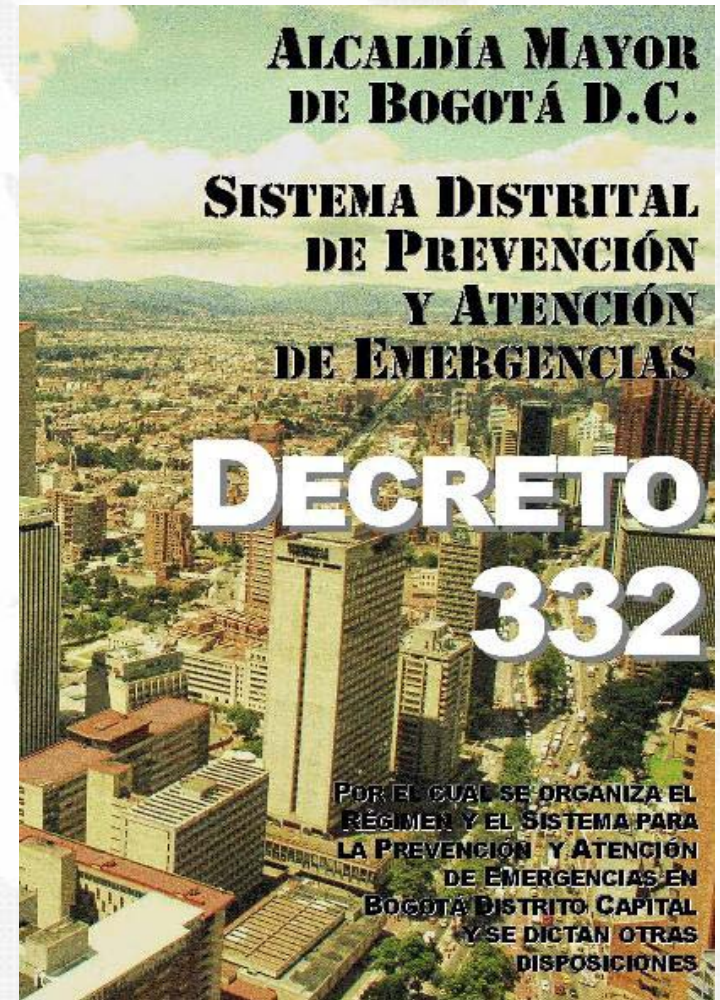
Secretaría
GOBIERNO

Bogotá sin indiferencia

- **Political Instruments:**
Government and Development Plans, Sectorial and Institutional Policies

- **Institutional Development:**
System for the Prevention and Attention of Emergencies - SDPAE

- **Normative Development:**
Support to the institutional development, responsibility and function allocation, political and administrative management elements



BOGOTA'S SYSTEM FOR THE PREVENTION AND ATTENTION OF EMERGENCIES

SDPAE

**CITY'S
MAYOR**

**DISTRICT'S COMMITTEE FOR THE PREVENTION
AND ATTENTION OF EMERGENCIES**

FOPAE

**DPAE - DIRECTION FOR THE PREVENTION
AND ATTENTION OF EMERGENCIES**

PLANNING COMMITTEE

HABITAT COMMITTEE

**INFRASTRUCTURE, MOVILITY AND
PUBLIC UTILITES COMMITTEE**

**EDUCATION, COMMUNITY'S
PARTICIPATION AND SOCIAL
MANAGEMENT COMMITTEE**

OPERATIVE COMMITTEE

LOCAL MAYOR

LOCAL EMERGENCIES COMMITTEE



Economical

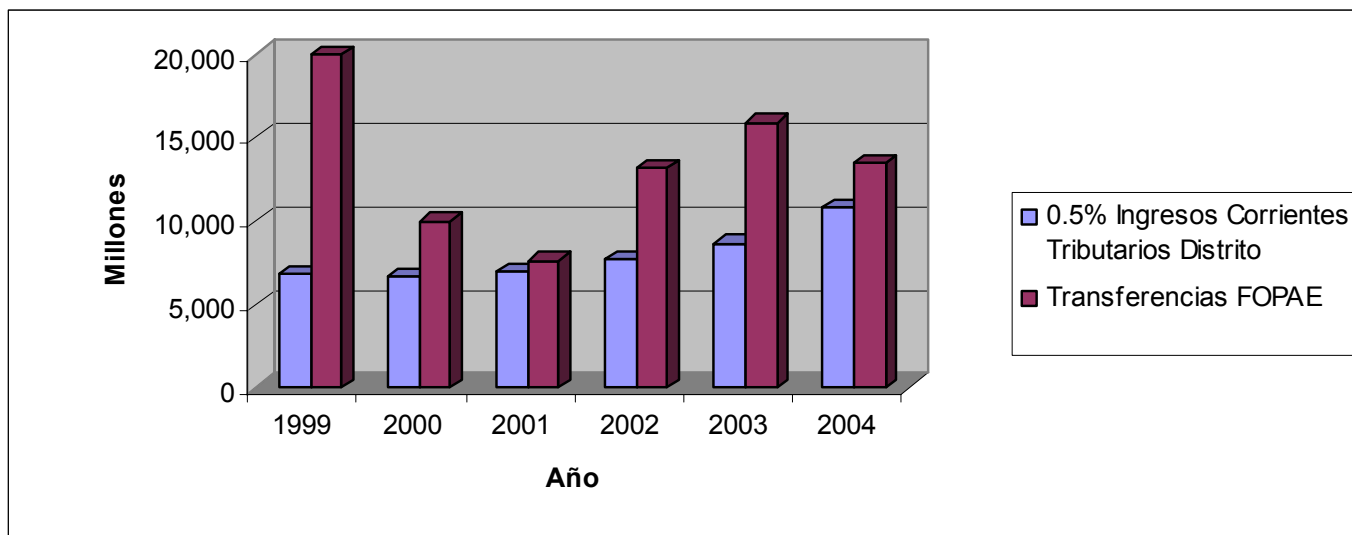
- **Investment Plans:**
central, sectorial, local
(identification and
priorization of needs)
- **Reduction of the Fiscal
Vulnerability:**
contingency funds, credits
and insurance procedures
- **Coresponsability:**
private and public
investment

RISK REDUCTION AND EMERGENCY RESPONSE INVESTMENT 2004 - 2008

SECTOR	MILLIONS OF USD
1. Social	415
2. Infrastructure	38
3. Government	30
TOTAL	483



BUDGET ALLOCATED TO THE FUND FOR THE PREVENTION AND ATTENTION OF EMERGENCIES - FOPAE -



	AÑO					
	1999	2000	2001	2002	2003	2004
0.5% Ingresos Corrientes Tributarios Distrito	6,844	6,679	6,941	7,697	8,666	10,848
Transferencias FOPAE	20,099	10,013	7,633	13,217	15,948	13,461

Datos en Millones de Pesos Colombianos

Para el 2003 equivale a US \$ 6 millones



Determinants for land use and occupation

**NON
OCCUPIED
AREA**



HAZARD

RESTRICTIONS FOR
FUTURE
DEVELOPMENTS

**OCCUPIED
AREA**



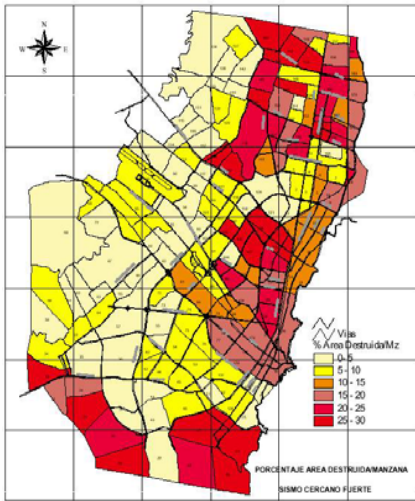
RISK

RISK
REDUCTION NOT
POSSIBLE

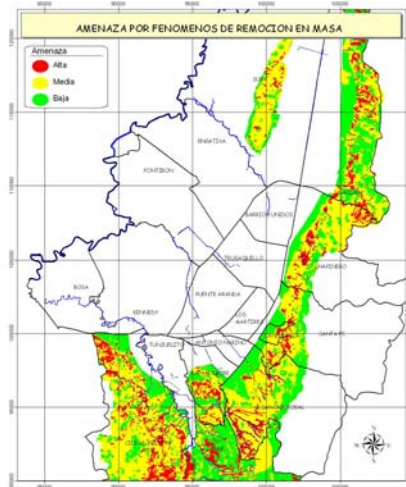
POSSIBLE
RISK
REDUCTION



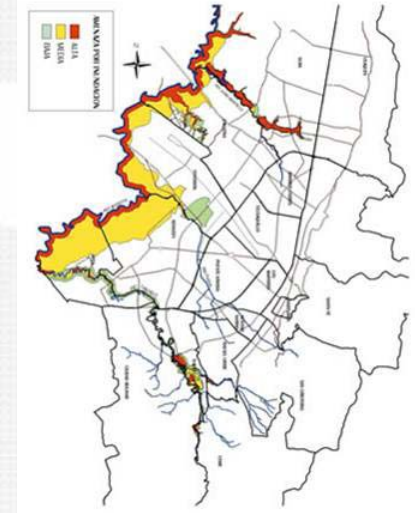
Risk Maps



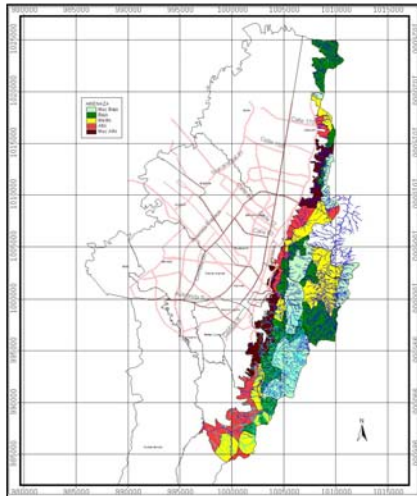
Seismic Risk



Landslide Risk



Flood Risk



Wildfires Risk



Technological Risk



ALCALDÍA MAYOR
DE BOGOTÁ D.C.

Secretaría
GOBIERNO

Bogotá sin indiferencia



Territorial Ordering Strategy

POLICIES

INSTRUMENTS

Regional

POTAR

Plan Maestro de Abastecimiento

Land

Plan Zonal del Norte

Operación Usme

Planes Parciales

Habitat

Unidades de Planeamiento Zonal

Planes Regularización e Implantación

Rural

Plan Maestro de Espacio Público

UPR

Planes de Mejoramiento CP

Economical

Plan Zonal Centro

Operaciones Estratégicas

Social

Plan Maestro de Movilidad

Planes Maestros de Servicios Públicos

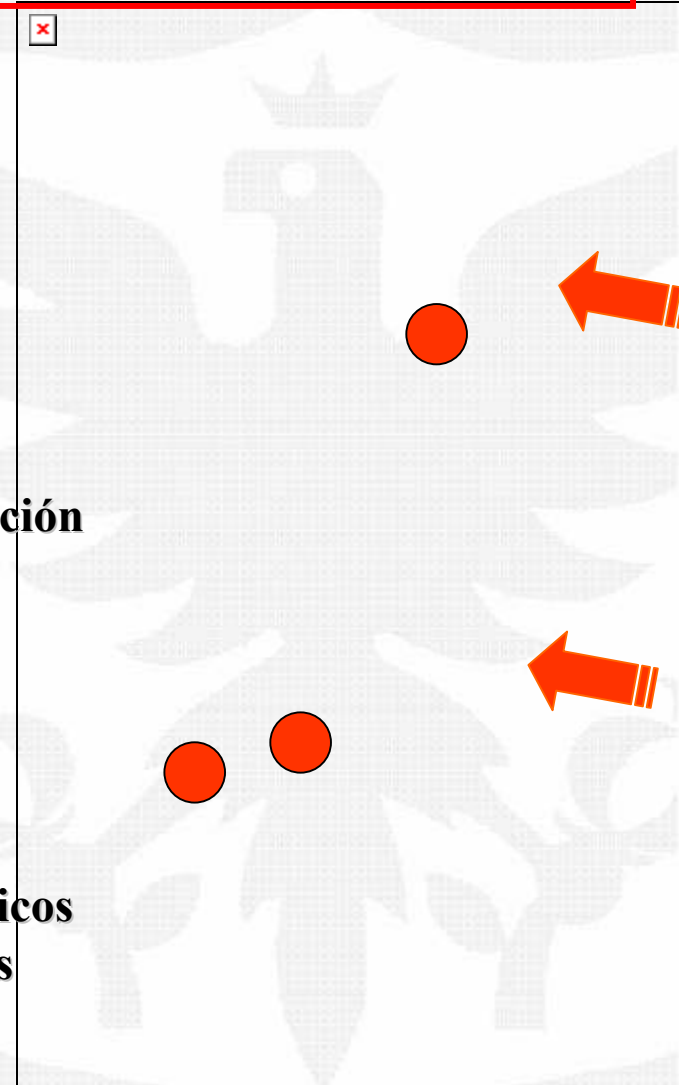
Environmental

Planes Maestros de Equipamientos

Pomco

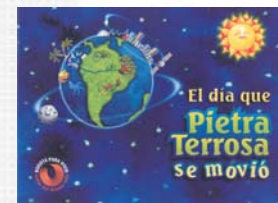
Planes Zonales de Cerros

Planes Minero Ambientales



Social and Cultural

- **Education:** teacher's training, school's curriculum
- **Social Consciosness** massive media dissemination
- **Local Emergencies Committees:** organization and community participation
- **Coresponsability:** public risk concept



WWW.SIRE.GOV.CO



Contenido General



**Bodega de
Información**



**Manejo de
Solicitudes**



Informes



Sondeos



Emergencias



**Eventos y
Monitoreo**



Proyectos



Directorios



Inventarios



**Reasentamiento
de
Familias**



Mapas

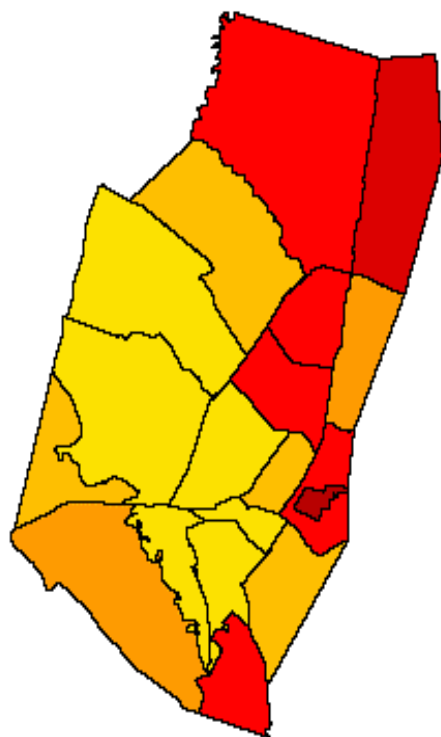


ALCALDÍA MAYOR
DE BOGOTÁ D.C.

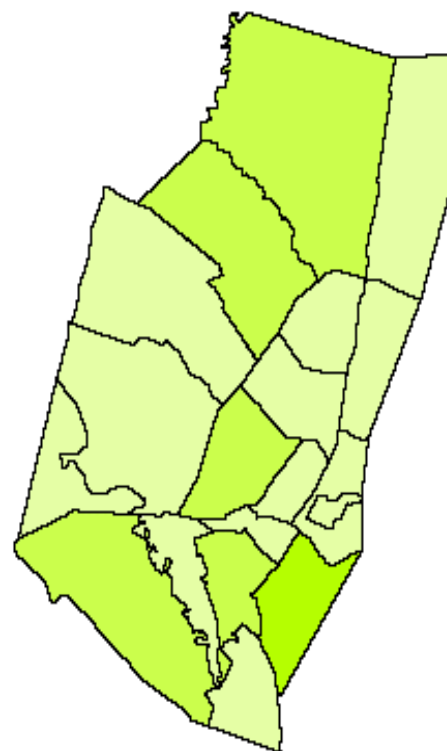
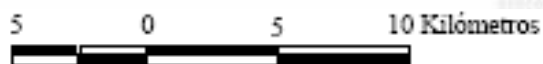
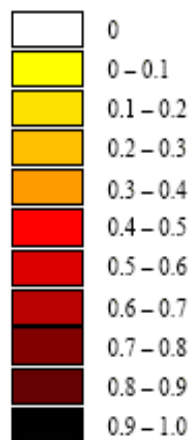
Secretaría
GOBIERNO

Bogotá *sin indiferencia*

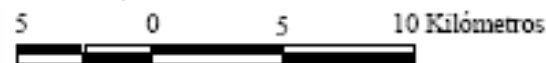
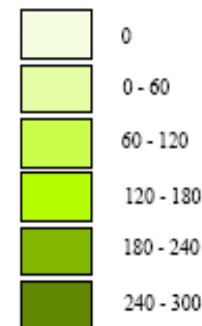
System of Indicators



Índice de Riesgo Total - R_T



IGR por localidades



$$R_T = R_F (1 + F')$$

$$IGR = IGR_{IR} + IGR_{RR} + IGR_{MD} + IGR_{PF}$$



ALCALDÍA MAYOR
DE BOGOTÁ D.C.

Secretaría
GOBIERNO

Bogotá *sin indiferencia*

Conclusion

- **Only if we intervene on the political, economical, social and cultural processes that determinate the territorial and population characteristics of our cities, we would be able to act over the risk generating factors**
- **Hazard and risk information must overall allow the intervention of the above mentioned processes, attending to the nature of the spaces and actors that partipate in them.**

