




1 MILLION
SAFE Schools &
Hospitals
Make a Pledge, Save a Life.

Advocacy Guide

Copyright © UNISDR Asia and the Pacific 2010

Disclaimer: The information and opinions expressed in this publication do not necessarily reflect the policies of the UNISDR secretariat.

Text written by Andres Winston C. Oreta

Illustrations by Airi Beltran

Editing by Antonio Fernandez and Kristoffer Berse

Layout design by Kristoffer Berse

About the cover photos

Front cover. Primary school students take cover under the desk in an emergency drill. SD Putren, Bantul, Yogyakarta, Indonesia. (Sae Kani / ASB Indonesia, 2009)

Back cover. Emergency room frontage. Typhoon Ketsana did not spare hospitals and health facilities as it unleashed torrential rains over the Philippines. Amang Rodriguez Medical Center, a 150-bed hospital in Marikina City, was severely flooded. Infrastructure, radiologic and laboratory equipment, medical supplies, medical records and vehicles were destroyed, with a total damage estimated at USD8.3 Million. Marikina City, Philippines. (WHO, 2009)



Advocacy Guide

One Million Safe Schools and Hospitals Campaign

Contents

- 2 Introduction
- 5 Basic Concepts
- 25 The One Million Safe Schools and Hospitals Campaign
- 29 How to Take Part as Advocate, Leader or Champion
- 44 Useful References

Preface

“Awareness is the first step towards action” (UNISDR 2007). This is the main rationale for this **One Million Safe Schools and Hospitals Advocacy Guide**. This guide aims to raise the awareness of primary stakeholders — children, teachers, parents, medical doctors, nurses, technicians, administrators, government and the public

— on the urgency of making schools and hospitals, especially those located in hazard-prone regions, safe from disasters. It presents in simple terms the concepts of safety, hazard, vulnerability and risk. It also provides the reader key questions for self assessment and reflection regarding the safety conditions of his/her

school or hospital. Once the need for safe schools and hospitals is appreciated, it is hoped that the reader will be encouraged to make a pledge in this global initiative aimed at creating a demand to ensure the safety of schools and hospitals from disasters.



Why campaign for safe schools and hospitals?

- ✓ Schools and hospitals are powerful symbols of social progress and development.
- ☞ Schools represent the children -- the nation's hope of the future -- and their education
- ☞ Hospitals represent the community's health and well being.
- ✓ People in unsafe schools and hospitals are at the greatest risk of losing their lives! Children in schools and the sick in hospitals are among the



- most vulnerable people in times of disaster.
- ✓ When schools are damaged, learning opportunities are disrupted and the quality of education drops. When hospitals are destroyed, treating the sick is hampered and saving victims during a disaster becomes difficult.
- ✓ The safety of schools and hospitals can be

- improved through a concerted effort and commitment of all stakeholders before a catastrophe strikes.
- ✓ The safety of schools and hospitals has to be enhanced to address the increasing risk due to climate change and other hazards - both natural and man-made.
- ✓ Countries vulnerable to climate change effects and hazards must take steps to reduce disaster risk in schools and hospitals.



Schools represent children, the nation's hope of the future.



Schoolchildren from different places in Asia. (Shoichi Ando / UNCRD; Andres Oreta)

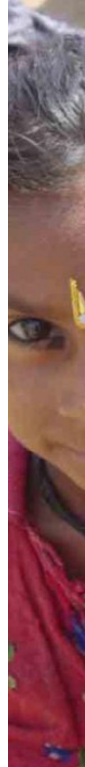
Safety first

Safety is a human concern – a concern that must be taken decisively by school and hospital communities given that they are in the business of caring for the young and preserving lives. School and hospital safety must be seriously pursued and achieved at all times, especially during emergencies. Schoolchildren and the sick are best protected by ensuring that the physical environment – the buildings, surroundings and facilities – are safe and secured, such as by

implementing regular maintenance of physical facilities and preparing a systematic and well-documented safety and disaster preparedness plan.

Take a walk around your school campus or health facility and observe the items listed in the checklist on the next page. Then ask yourself the following questions: Is my school or hospital safe? What policies and actions should be done to improve the safety conditions in my school or hospital?

Are your schools and hospitals safe from disasters?
What can be done to make them safer?



Safety First

.....

Are basic conditions and necessities in place to provide for the health, security and safety of the occupants in your school or hospital?



Sample Safety Checklist



- ☑ Water suitable for food preparation and drinking is available.
- ☑ Water suitable for personal hygiene and cleaning is available.
- ☑ Adequate lighting in all areas of the building and surroundings is provided.
- ☑ A manual fire alarm system is in place.
- ☑ Fire extinguishers are found in corridors and exit routes.
- ☑ Fire extinguishers are found at the entrances of high-risk rooms such as laboratories.
- ☑ Floors are clean and not slippery.
- ☑ Floors are without splinters and holes.
- ☑ Access for persons with disabilities is provided.
- ☑ Corridors are wide and spacious.
- ☑ Corridors are free from obstructions especially during an emergency.
- ☑ Roofing materials are completely and securely fastened and leak-proofed.
- ☑ Doors can always be opened from the inside for emergency exit purposes.
- ☑ Stairways have safe and adequately secured railings.
- ☑ Electrical wires and cables are properly fastened and secured.
- ☑ Doors are securely attached to jambs.
- ☑ Entrance and exit points are clearly designated.

Safety First

.....

- ☑ Storage of combustible and hazardous chemicals and gases is safely and appropriately located.
- ☑ Combustible and hazardous chemicals and gasses are secured from theft, vandalism and pilferage.*
- ☑ Hazardous materials/chemicals are properly and adequately stored.*
- ☑ Electrical and emergency lights are functional with battery backup in all critical areas.*
- ☑ Emergency drills (e.g. fire, earthquake drills) are regularly conducted.
- ☑ Proper exit markings are provided to assist people who are not familiar where exits/emergency exits are located.
- ☑ Emergency evacuation maps are posted in critical areas.
- ☑ Periodic inspection, repair and maintenance of facilities and surroundings are undertaken.

*Note: * indicates that a particular safety feature is especially important for hospitals.*

Recognize the hazards

A hazard is generally defined as “a dangerous phenomenon, substance, human activity or condition that may cause loss of life, injury or other health impacts, property damage, loss of livelihoods and services, social and economic disruption, or environmental damage” (UNISDR 2009). Hence, hazards may be triggered by nature (e.g. typhoons, earthquake) or human activities (e.g. urban fire, terrorism). Natural hazards are among the most destructive, and

unfortunately, unavoidable. Therefore, interventions must be done to reduce the impact of natural calamities to human suffering.

In securing hospitals and schools, emphasis must be devoted on cushioning the impact of hazards on vulnerable groups, such as schoolchildren and the sick. Additional safety and risk reduction features have to be provided to minimize the risk, most especially those caused by natural hazards.

Knowing the hazards that threaten schools and hospitals is an important step in preparing safety and disaster management plans.

Natural hazards, in particular, are site-dependent. The location of your school or hospital is one important factor that must be assessed to effectively implement safety plans and policies.

Thus, the important questions to ask are: Is your school or hospital threatened by natural hazards? Which hazards are of concern to your institution?

The next pages provide a brief description of common hazards and their possible impacts. Get to know these hazards, reflect and identify which hazard could put you and your school or hospital at greatest risk.



Description of Common Hazards

Floods



Floods are caused by intense rainfall or inundation associated with seasonal weather patterns such as tropical cyclones, typhoons and tsunami waves. Schools and hospitals located in floodplains and low-lying areas, along the coast, or near creeks, rivers, and other bodies of water, are highly vulnerable to floods. Structures, equipment, records and facilities could be damaged when inundated, washed away or hit by floating debris. Floods may also induce landslides as soils become saturated. Drowning is the major cause of deaths.

Has there been an incidence of flooding at your school or hospital?

() Yes () No

Windstorms



Windstorms, in the form of a hurricane, cyclone or typhoon, come with strong winds, exceptional rainfall and storm surges which can cause tremendous damage and trigger secondary flooding and landslides. Strong winds can collapse windows and doors, rip off rooftops, topple walls and tear partitions. Flying or falling debris can cause extreme damage to structures and injuries to people.

Is your school or hospital located in a region frequently visited by strong hurricanes, cyclones or typhoons?

() Yes () No

Recognize the Hazards

.....

Earthquakes



Earthquake releases vibrations and forces that can damage or topple a building and endanger people's lives. Aside from strong ground shaking in areas near earthquake faults, it can also trigger liquefaction in sites with soft soil, landslide in steep slopes, and tsunami in coastal communities. Fire outbreaks are also common following an earthquake disaster. Earthquakes and its associated phenomena can seriously damage critical infrastructures such as schools and hospitals.

Is your school or hospital located in a region with high seismic activity?

() Yes

() No

Landslides



Landslides involve slipping of soil and rock on sloping ground due to various triggers such as earthquakes, strong rain or volcanic eruptions. Buildings standing on the edge of steep slopes, very soft soil and cliff tops are highly vulnerable to landslides or mudslides. People and structures below unstable slopes can be buried by a landslide or mudslide.

Is your school or hospital lying near or below a steep slope?

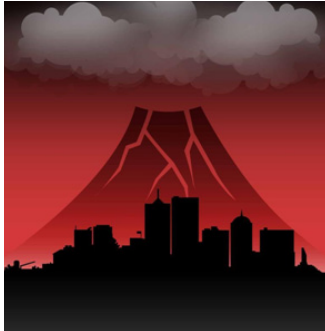
() Yes

() No

Recognize the Hazards

.....

Volcanoes



A volcanic eruption ejects lava, toxic gases and solid particles. Lava flow could destroy structures and kill people in its path. Ashfall could accumulate and collapse roofs of buildings, as well as infiltrate and damage equipment. Volcanic gases could cause poisoning to human beings.

Is your school or hospital located near an active volcano?

() Yes () No

Fires



Fires could be due to natural causes (wild fires) or human activities (e.g. faulty electrical wiring). Buildings near forested area during the dry season are highly vulnerable to wild fires. Schools and hospitals located in a congested area with little space between structures could be easily affected by urban fires within the vicinity. Fires destroy property and kill people by burning and suffocation.

Is your school or hospital located near a dry forested land or a congested neighborhood?

() Yes () No

Recognize the Hazards

.....

Tsunamis



Earthquake can cause tsunami waves if the epicenter is located under the sea. It causes waves that travel at high speed from the source and upon reaching the shore, diminishes in speed and forms a large coastal wave which crashes anything in its path - structures, trees, etc. -- and causes flooding in low-lying coastal regions. Deaths occur principally by drowning and injuries from battering by debris.

Is your school or hospital located near a low lying coastal area?

() Yes

() No

Recognize the Hazards

.....

Other hazards that could affect your school or hospital are tornadoes, lightning, extreme temperature, terrorism, industrial and chemical accidents, and infectious diseases.

Knowing the hazards that would affect the safety of the school or hospital is an important step in preparing safety and disaster management plans. Information about the hazards can be obtained from various sources. There are specialized government

agencies and research institutions that could provide hazard maps related to earthquakes, liquefaction, flooding, volcanoes, typhoons and landslides. Historical records of past disasters that affected the school or hospital and its vicinity can also provide useful information in assessing the potential impact of a hazard.

Other hazards that could affect your school or hospital are tornadoes, lightning, extreme temperature, terrorism, industrial and chemical accidents, and infectious diseases.

Recognize the Hazards

.....

In which scenario
do you want to be?



Check vulnerability

Obviously, providing the basic safety features in schools and hospitals is not enough to protect people and properties in hazard-prone areas. Hazards pose greater risks to schools or hospitals if interventions are not done to limit, reduce or eliminate the vulnerability of human beings and structures to these hazards.

Vulnerability refers to “the characteristics and circumstances of a community, system or asset that make it susceptible

to the damaging effects of a hazard” (UNISDR 2009). Vulnerability arises from various physical, social, economic, and environmental factors with respect to a specific hazard. When both hazard and vulnerability exist then there is a risk that a disaster may occur. Risk is a product of both hazard and vulnerability. A hazard may exist but if the community has anticipated the effects of a specific hazard and installed mitigating measures thus reducing vulnerability and increasing the coping

A school or hospital is at risk when both hazard and vulnerability exist.



Check Vulnerability

.....

capacity, the risk may be minimal. Disaster risk, here is, simply defined as the level of potential losses due to a hazard such as number of deaths and injuries , number of collapsed buildings, number of damaged equipment or loss of income. By knowing the vulnerable elements in schools and hospitals with respect to specific hazards, the weaknesses and threats can be addressed and the disaster risk may be reduced.

Here are few examples of

physical factors contributing to vulnerability with respect to specific hazards. If your school or hospital expects the possibility of the occurrence of these hazards, the vulnerability conditions should be removed to reduce the risk or potential losses.

Earthquake

The type and material of construction affect the performance of buildings against ground shaking. Buildings of unreinforced masonry (bricks or adobe) are more vulnerable than those

made of timber or reinforced concrete. When not properly anchored, tall cabinets, shelves, appliances, medical equipment and other movable equipment could easily be toppled and damaged, and cause injuries or death.

Flood

Clogged drainage systems and lack of vegetation contributes to flooding. If not properly elevated and secured, school or hospital equipment, computers and records could easily be

Check Vulnerability

.....

destroyed when inundated.

Fire

Total damage due to fires are often caused by a variety of factors which include delay of discovery of the fire due to malfunctioning of alarms, lack of fire walls, absence of fire extinguishers and sprinkler systems, and inadequate water supply for manual fire suppression activities.

Windstorm

Roofs not properly designed and constructed could easily

be detached and blown away by the wind. Unreinforced walls could be knocked over by wind forces.

Landslide

Without slope stabilization or wall protection against unstable slopes, buildings could be buried or fall when a landslide occurs.

Tsunami

The absence of an early warning and evacuation plan could cause a large number of fatalities in a coastal community.

The lack of awareness and preparedness of the school or hospital occupants also contributes to vulnerability of the people and increases risk to the hazards. The following important questions must be considered in disaster preparedness:

- ✓ Does the school or hospital have an **emergency and disaster management committee**?
- ✓ Do all occupants (e.g. students, teachers, staff, administrators, etc.) know **what to do**

Check Vulnerability

.....

The lack of awareness and preparedness makes people vulnerable to the hazard.

- before, during and after a disaster?
- ✓ Is **information** on what to do before, during and after a disaster properly disseminated to all concerned including schoolchildren, patients, elderly and people with disabilities?
- ✓ Are **emergency drills** conducted regularly?
- ✓ Has a **safe location** been identified if the school or hospital must be vacated?
- ✓ Is passage to the **evacuation site** safe?
- ✓ Have the **needs of**

people with restricted ability such as the sick, elderly and persons with disabilities been taken into account especially during evacuation?

To determine completely the institution's vulnerability and risk to specific hazards, a comprehensive vulnerability and risk assessment must be conducted with the assistance from experts, such as geologists, seismologists, engineers, architects, etc.

Reduce the risks

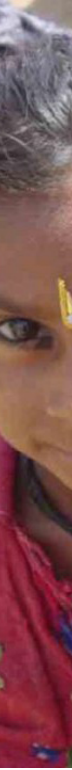
For many types of disasters, it is impossible to prevent the actual geological or meteorological process from occurring: volcanoes erupt, earthquakes occur, cyclones and wind storms rage. The key in making schools and hospitals safer is risk reduction or mitigation. Risk reduction may involve reducing the impact of the hazards or the vulnerability of elements that are likely to be affected.

Examples of reducing the

impact of the hazards are:

- ✓ **Construction of levees** along the banks of certain rivers reduces the chance of flooding in surrounding areas.
- ✓ **Stabilization of land pressure, construction of retaining walls and improvement of drainage of slopes** can prevent landslides and rockfalls.
- ✓ **Tree planting** can be an effective way to reduce the potential of floods and mudslides.
- ✓ **Improvement of soft foundation** can prevent

The key in making schools and hospitals safer is risk reduction.



Reduce the Risks

.....

We can reduce the risks posed by natural hazards.



earthquake-induced soil liquefaction to occur.

When threats from hazards could not be prevented or minimized, then risk reduction should focus on ways of lessening the vulnerability of elements to the hazards. These elements include people, facilities, equipment, property and non-tangible assets. Disaster risk reduction consists of both social and physical interventions or actions that must be carried out incrementally. To achieve

the objective of making schools or hospitals safer, the following actions need to be done:

- ✓ **Awareness and Preparedness.** Stakeholders must promote awareness about safe schools and hospitals and practice preparedness in case of emergency and disasters to increase their coping capacity and make them more resilient.
- ✓ **Disaster Management.** Administrators must form a safety and disaster management committee

to review, assess and formulate policies and plan of actions for disaster preparedness and response.

- ✓ **Site Assessment.** The location of schools and hospitals must be assessed with respect to the impact of various hazards.
- ✓ **Vulnerability Assessment.** Vulnerability assessments of schools and hospitals and their surroundings, facilities, functions, and building elements (i.e. non-structural and

Reduce the Risks

.....

Making schools and hospitals safer against hazards requires a commitment of all stakeholders.

structural) must be conducted to determine how the threats and weaknesses of the school or hospital could be addressed.

- ✓ **Retrofitting.** Schools, hospitals and health facilities that are at great risk to a hazard must be prioritized for retrofitting or, if necessary, relocation. Retrofitting can be non-structural (i.e., facilities, architectural, functional) or structural (i.e. columns, walls, beams of

buildings, etc.) in nature.

Making schools and hospitals safe against hazards requires a commitment of all stakeholders — students, teachers, medical doctors, nurses, administrators, civil society and government. The first step toward this end is to act now.

Promote safe schools and hospitals

What is a Safe School?

- ✓ A safe school provides a learning environment where children's education, health, safety and security are assured in both normal times and during disasters.

- ✓ A safe school consists of infrastructures that are structurally sound and facilities that do not harm

the students, teachers and staff, especially during disasters.

- ✓ A safe school is a community of learners

committed in promoting a culture of safety, aware of its risks and prepared to respond to disasters.

- ✓ A safe school has minimal disruption during disasters and thus continues to

provide a healthy learning environment to the youth.



What is a Safe Hospital?

✓ A safe hospital provides health services efficiently during both normal and critical times after a disaster or an emergency.

✓ A safe hospital is structurally strong and will not collapse due to hazards, injuring patients and staff.

✓ A safe hospital is resilient and organized with contingency plans in place and a health workforce trained to keep the

network operational in times of crisis.

facility when it is most needed during disasters.



<< A doctor attends to the needs of a patient in a community hospital. (WHO-Manila)

✓ A safe hospital can continue to function and provide its services to the community as a critical

Make a Pledge, Save a Life.

Support the **One Million Safe Schools and Hospitals Campaign** by making a pledge online at <http://www.safe-schools-hospitals.net>. You can pledge in any of the following roles:

- ✓ As an **advocate** for safe schools and hospitals
- ✓ As a **leader** for emergency and disaster preparedness
- ✓ As a **champion** for disaster risk reduction



Campaign Website

For more information about the campaign, visit <http://www.safe-schools-hospitals.net>



How can you help promote safe schools and hospitals?

If you are a student

Be a Safe School/Hospital **ADVOCATE**

- ✓ Send a letter to your principal to support the campaign
- ✓ Post a poster in your school
- ✓ Organize safety awareness activities

Be an Emergency Preparedness **LEADER**

- ✓ Send a letter to your principal to support the campaign
- ✓ Post a poster in your school
- ✓ Organize safety awareness activities

Be a Risk Reduction **CHAMPION**

- ✓ Send a letter to your principal to support the campaign
- ✓ Post a poster in your school
- ✓ Organize safety awareness activities

If you are a school teacher



Be a Safe School/Hospital **ADVOCATE**

- ✓ Post a poster in your office and classroom
- ✓ Teach safety and disaster awareness
- ✓ Organize safety awareness activities

Be an Emergency Preparedness **LEADER**

- ✓ Conduct emergency drills
- ✓ Join the school emergency preparedness committee
- ✓ Teach how to prepare a safety kit
- ✓ Learn first aid
- ✓ Join safety trainings

Be a Risk Reduction **CHAMPION**

- ✓ Report unsafe conditions and faulty safety equipment
- ✓ Volunteer in safety assessments and building investigation
- ✓ Raise funds to purchase safety equipment
- ✓ Petition government for funds

If you work in a hospital



Be a Safe School/Hospital **ADVOCATE**

- ✓ Post a poster in your office and hospital bulletin boards
- ✓ Invite your colleagues to support the campaign
- ✓ Support safety awareness activities

Be an Emergency Preparedness **LEADER**

- ✓ Join the emergency preparedness committee
- ✓ Participate in emergency drills and trainings
- ✓ Learn hospital emergency response procedures
- ✓ Teach first aid

Be a Risk Reduction **CHAMPION**

- ✓ Report unsafe conditions and faulty safety equipment
- ✓ Volunteer in safety assessments and building investigation
- ✓ Raise funds to purchase safety equipment
- ✓ Petition government for funds for retrofitting/relocation

If you are a school or hospital administrator

Be a Safe School/Hospital **ADVOCATE**

- ✓ Send a letter to government to support the campaign
- ✓ Post a poster in your school
- ✓ Organize safety awareness activities
- ✓ Integrate safety and disaster awareness in the curriculum

Be an Emergency Preparedness **LEADER**

- ✓ Organize school/hospital emergency preparedness committee
- ✓ Create an emergency and contingency plans
- ✓ Organize emergency drills
- ✓ Conduct trainings for the staff
- ✓ Coordinate with emergency agencies
- ✓ Implement safety policies and building maintenance

Be a Risk Reduction **CHAMPION**

- ✓ Conduct a site vulnerability and risk assessment
- ✓ Implement risk reduction measures
- ✓ Raise funds to purchase safety equipment
- ✓ Petition government for funds for retrofitting/relocation

If you are a parent or member of civil society



Be a Safe School/Hospital **ADVOCATE**

- ✓ Send a letter to your principal to support the campaign
- ✓ Support safety awareness activities

Be an Emergency Preparedness **LEADER**

- ✓ Join the emergency preparedness committee
- ✓ Join emergency drills
- ✓ Encourage coordination among local officials, business and schools to maximize efforts in preparedness and response

Be a Risk Reduction **CHAMPION**

- ✓ Adopt a school
- ✓ Volunteer in school safety assessments
- ✓ Raise or donate funds for the purchase safety equipment or repair of facilities
- ✓ Petition government for funds for retrofitting/relocation

If you are a government leader



Be a Safe School/Hospital **ADVOCATE**

- ✓ Act as resource speaker supporting the campaign
- ✓ Support safety awareness activities
- ✓ Reproduce copies of posters and distribute in schools

Be an Emergency Preparedness **LEADER**

- ✓ Organize a community emergency preparedness committee
- ✓ Organize emergency drills in the community
- ✓ Conduct joint trainings and seminars with school, hospital, fire and police dept.

Be a Risk Reduction **CHAMPION**

- ✓ Enact/implement laws on safe schools
- ✓ Support site vulnerability and risk assessments in schools
- ✓ Allocate resources for risk reduction measures and retrofitting
- ✓ Petition the government for budget increase

If you are a member of a non-governmental or professional organization



Be a Safe School/Hospital **ADVOCATE**

- ✓ Send a letter to administration and government to support the campaign
- ✓ Act a resource speaker supporting the campaign
- ✓ Reproduce copies of posters and distribute in schools

Be an Emergency Preparedness **LEADER**

- ✓ Support the school emergency preparedness plan
- ✓ Train students on first aid and drills

Be a Risk Reduction **CHAMPION**

- ✓ Adopt a school
- ✓ Volunteer services for site and building assessments and inspection
- ✓ Assist in school retrofitting
- ✓ Monitor building projects to help assure safety standards are met
- ✓ Raise funds for purchase of safety equipment, school repairs

If you work in mass media



Be a Safe School/Hospital **ADVOCATE**

- ✓ Promote the campaign for safe schools and hospitals
- ✓ Report good safety practices in schools and hospitals

Be an Emergency Preparedness **LEADER**

- ✓ Disseminate disaster warnings
- ✓ Work with school/hospital emergency preparedness committee to get accurate information and updates
- ✓ Report emergency drills

Be a Risk Reduction **CHAMPION**

- ✓ Adopt a school
- ✓ Support fund raising campaigns
- ✓ Monitor building projects to help assure they meet safety standards
- ✓ Call the attention of administrators on unsafe conditions

Examples of Actions of a Safe School/Hospital Advocate

- ✓ Individuals may **download the poster** about safe schools or hospitals from the Campaign website (<http://www.safe-schools-hospitals.net>) and post it in classrooms, hospital offices, etc.
- ✓ A grade school student could **send a letter** to his/her school principal or to government leaders to improve the safety conditions of the school.
- ✓ A teacher could **give safety lessons** to students.
- ✓ A student organization could **host a poster-making contest** on safe schools.
- ✓ A student theater group could **present a stage play** on what people should or should not do during a disaster.
- ✓ The hospital administration could **organize a safety awareness week**.
- ✓ The media could **feature best safety practices** in a specific school or hospital.

A Safe School/Hospital Advocate

“I pledge to make people aware about safe schools and hospitals.”



Examples of Actions of an Emergency Preparedness Leader

- ✓ A student could prepare a Do-It-Yourself safety kit.
- ✓ A teacher could practice earthquake drills with his/her students.
- ✓ The school principal could schedule regular emergency drills (e.g. fire, evacuation, etc.).
- ✓ Doctors/nurses could teach first aid lessons to students.
- ✓ The hospital administrator could organize a safety and disaster preparedness committee to review the hospital's existing policies.
- ✓ The student council could create a committee addressing safety issues in the university.
- ✓ A TV network could produce and distribute videos on emergency preparedness.

An Emergency Preparedness Leader

“I pledge to be prepared in case of emergencies and disasters.”

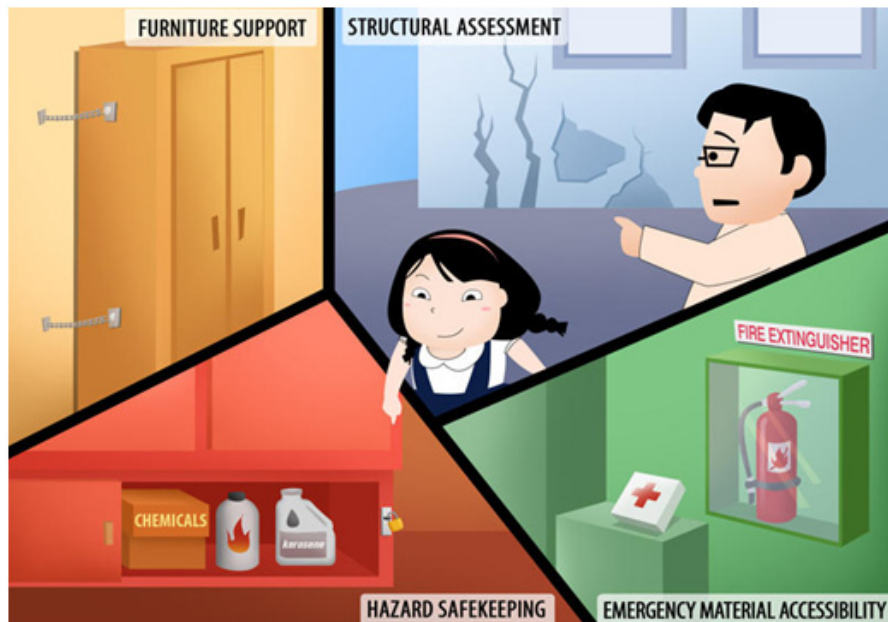


Examples of Actions of a Risk Reduction Champion

- ✓ A student could **make a list** of unsafe facilities (e.g. broken windows, unsafe electrical wire) and submit to the administrators.
- ✓ A teacher and his/her class could **prepare safety and emergency signs** (e.g. emergency exit, evacuation route) in schools.
- ✓ The Parents-Teachers Association could **donate fire extinguishers**.
- ✓ The hospital maintenance staff could **request the administration** for replacement of non-working fire or smoke alarms.
- ✓ An association of civil engineers or architects could **volunteer to conduct seismic assessments** of schools or hospitals.
- ✓ The building administrator could **initiate vulnerability assessment** of facilities and equipment.
- ✓ The governor could **prioritize retrofitting** of dangerous schools and hospitals.
- ✓ A minister can **announce** that all schools in the country will be assessed for safety from possible disaster by a certain date.

A Risk Reduction Champion

“I pledge to contribute time, effort or resources to make schools and hospitals safer.”



>> Teacher reading ASB's picture story of earthquake to physically disabled students. SLD Mardi Mulya, Kretek, Bantul, Indonesia. (Sae Kani / ASB Indonesia, 2009)



Useful References

California's Coalition for Adequate School Housing. (2008). **Facility Inspection Tool Guidebook**. (88 pp). Sacramento, California, USA. <http://www.cashnet.org/resource-material/FITGuidebook.pdf>

National Clearinghouse for Educational Facilities. **NCEF Safe School Facilities Checklist**. <http://www.edfacilities.org/checklist/8>

PAHO. (2008). **Hospital Safety Index: Evaluation Forms for Safe Hospitals**. (36pp). Washington, D.C.: PAHO/WHO. <http://safehospitals.info/images/stories/3Resources/techGuides/SafeHospFormsEng.pdf>

Petal, M. (2008). **Disaster Prevention for Schools Guidance**

for Education Sector Decision-Makers. (58pp). Geneva: UNISDR. http://www.preventionweb.net/files/7344_DPforSchoolssm.pdf

UN ISDR. (2006). **World Disaster Reduction Campaign: Disaster Risk Reduction Begins at School**. (25pp). Geneva, Switzerland: UN/ISDR. http://www.unisdr.org/eng/public_aware/world_camp/2006-2007/pdf/WDRC-2006-2007-English-fullversion.pdf

UN ISDR. (2007). **Towards a Culture of Prevention: Disaster Risk Reduction Begins at School**. (156pp). Geneva, Switzerland: UN/ISDR. http://www.unisdr.org/eng/about_isdr/isdr-publications/11-education-good-practices/education-good-practices.pdf

UN ISDR. (2009). **UNISDR Terminology on Disaster Risk Reduction**. <http://www.unisdr.org/eng/library/UNISDR-terminology-2009-eng.pdf>

WHO-WPRO. (2009). **Safe Hospitals in Emergencies and Disasters**. (33 pp). <http://www.wpro.who.int/NR/rdonlyres/390133EC-089F-4C77-902D-DFEE8532F558/0/SafeHospitalsinEmergenciesandDisasters160709.pdf>

<http://www.safe-schools-hospitals.net>






1 MILLION
SAFE Schools &
Hospitals
Make a Pledge, Save a Life.



United Nations International
Strategy for Disaster Reduction
Secretariat Asia and the Pacific